


Anritsu envision : ensure

Site Master™ S331L

Handheld Cable & Antenna Analyzer

Featuring Classic & Advanced Modes
2 MHz to 4 GHz Cable & Antenna Analyzer
50 MHz to 4 GHz Power Meter





Site Master is the Most Trusted, Reliable, and Preferred Cable and Antenna Analyzer by Tower Contractors, Installation and Maintenance Contractors, and Wireless Service Providers

The Site Master S331L is the best value in a low cost, field optimized, trusted, reliable, rugged, easy to use, one port cable and antenna analyzer.

Optimized for Field Use

- >8 hour battery life
- Instant On from standby mode
- Highest RF Immunity
- Built-in InstaCal™ Module
 - Fast, one connection calibration
- FlexCal™ Calibration
 - One calibration for all frequencies
- Built-in power meter
- Rugged and reliable
- Impact, dust, and splash resistant
- Smallest, lightest, fully integrated Site Master
- Optical connector inspection with IEC 61300-3-35 based Pass/Fail standard (Requires USB Video Inspection Probe, sold separately)



Easy to Use

- Integrated Help function
- S331D-like Classic Mode
- S331E-like Advanced Mode
 - Additional markers
 - Customizable shortcuts
 - Full-screen view
- Multiple USB ports
- 800 x 480 7" TFT touchscreen
 - Alphanumeric keyboard
 - EZ Name Quick Matrix
- Backlit keypad

Efficient Sweep Management

- Internally store >1000 files
 - Sweeps, setups, screenshots
- Fast preview of stored sweep
- Line Sweep Tools (LST) Software
 - Edit sweeps, rename, archive
 - Generate PDF or HTML reports
- Standard *.dat sweep file format
- Compatible with Smart Aligner Android application for combined antenna alignment and line sweep closeout reports

Site Master™ S331L Cable & Antenna Analyzer Features



Cable & Antenna Analyzer



S331L SITE MASTER IS SPLASH RESISTANT

Rugged, dust, and splash resistant. Reliable, lightweight and portable.

Site Master S331L is rugged, dust and splash resistant, reliable, field proven and always ready, even if you're not. At under 2.0 kg (4.4 lbs) including battery, it's effortless to carry whether you are on level ground, climbing a large tower, or heading through a roof hatch, your Site Master easily goes along with you.



STARTING OUT FULLY CHARGED AT 9:00 AM

Beginning of a traditional workday

With the battery fully charged, you're ready for a full workday of measurements. This is the longest lasting Site Master operation time we've ever offered in a handheld cable and antenna analyzer. You won't need to look for outlets and drag power supplies with you from site to site anymore. Now you can focus on what matters, making measurements and getting the job completed.



ALL DAY ON BATTERY AND STILL RUNNING AT 5 PM

8 hours later, still running and still measuring

After 8 continuous hours of battery operation, the Site Master S331L is still measuring. We understand that 8 continuous hours is an unlikely scenario, but we are proud of the S331L's extended battery life and feel it deserves to be recognized.

The S331L also has intelligent power saving features to extend the operating time further, providing as much as 10 hours of operation.

Features like sleep mode with instant on, handy for travelling between sites, and auto-display brightness that will reduce the screen backlight automatically if the instrument has not been accessed for some time. One touch of the screen, keypad, or twiddle-knob will automatically restore brightness levels.

Site Master™ S331L Cable & Antenna Analyzer Features



Cable & Antenna Analyzer

Efficient Menu Screen

The Menu Key activates the touch screen menu for one button access to all of the Analyzers modes, and quick access to the dedicated setup shortcut icons



MAIN MENU SCREEN PROVIDES ONE TOUCH MODE SELECTION

One Button Help

An intelligent, useful help menu launches with the press of the Help Key.



ON SCREEN HELP MENU

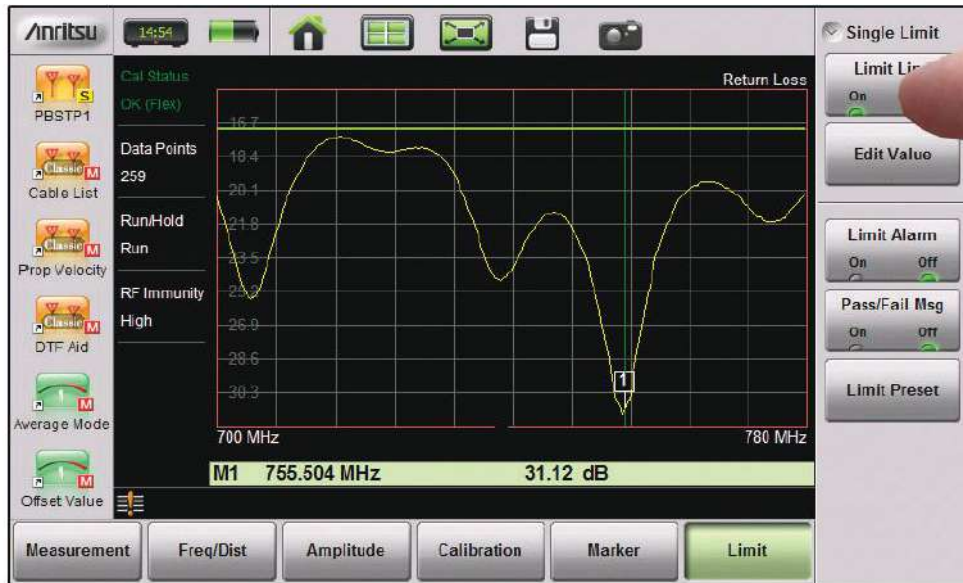
Site Master™ S331L Cable & Antenna Analyzer Features



Cable & Antenna Analyzer

Markers & Limits

Using the stylus pen (provided) or fingers, users can drag or place markers anywhere on the measurement screen. The number keys and/or the rotary knob can be used for entering values and applying or adjusting limits. As a safety measure limits are not affected by the stylus or finger activity to ensure they are not accidentally moved while adjusting markers via the touch screen.



DRAGGING MARKERS AND LIMITS WITH FINGERS IS REALLY EASY AND CONVENIENT

Convenient Shortcuts

User defined shortcuts can be created for one-button access to commonly used functions. (Advanced Mode only)



USER DEFINABLE SHORTCUTS FOR FREQUENTLY USED FUNCTIONS

Site Master™ S331L Cable & Antenna Analyzer Features



Cable & Antenna Analyzer



CONVENIENT MULTIPLE USB PORTS

Multiple USB ports

The Site Master S331L comes with two USB type A ports and one USB type mini B port. This allows for a quick and convenient file transfer, memory expansion, or you can add an external mouse or keyboard to enhance usability. You can even charge your cellphone in case it happens to run out of battery power.



INSTACAL™/POWER METER MODULE

Field replaceable module

We know accidents can happen out there, so we developed a field replaceable module solution to save valuable time and money, allowing you to keep your productivity up. If a user accidentally damages the Power Meter module by putting too much power into it, simply contact Anritsu and we will send you a replacement exchange module* that simply plugs into the dedicated slot and is held in with 4 screws. There's no need to return your instrument, no need to recalibrate the instrument, (calibration factors are stored within each module) and most importantly, down time is reduced to the absolute minimum. Order a spare module for your field kits and your downtime in the event of an accident is essentially zero.



EASY TO SEE BACKLIT KEYS

LED Backlit Keypad

The LED backlit keypad allows for operation in dimly lit environments. Whether it's the winter season, or you are just working late into the evening, you'll be able to see the keypad without any strain. You'll know exactly what key you are pressing so you can complete your measurements more efficiently.

*Charges may apply. Exchange module pricing is based on defective core returned to Anritsu. Contact Anritsu for more details.

Site Master™ S331L Cable & Antenna Analyzer Features



Cable & Antenna Analyzer



BUILT IN POWER METER MEASUREMENT SCREEN



Internal Power Meter

The Site Master S331L includes a convenient, easy to use, built in power meter.

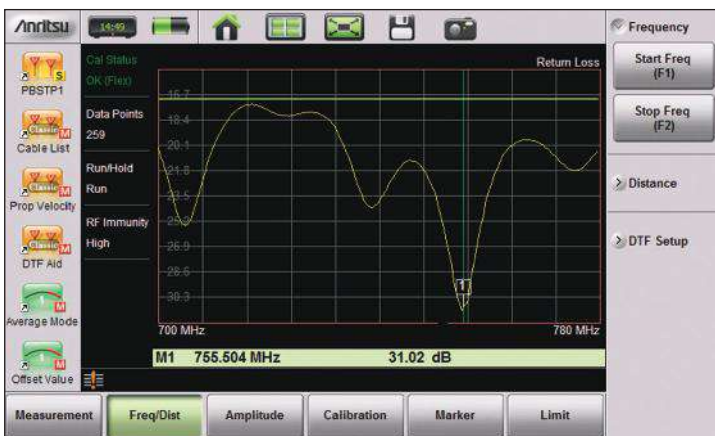
Setting the transmitter output power of a base station properly is critical to the overall operation of wireless networks. A very small change in power levels can create a large change in actual coverage area, resulting in dropped calls and low data rates.



CLASSIC MODE CAN REDUCE OR ELIMINATE TRAINING FOR EXPERIENCED SITE MASTER USERS.

Classic Mode

The Site Master S331L offers a convenient Classic Mode that's easy to use. If you have used the Site Master D series model, or even older Site Master models, you'll find this Classic Mode familiar and easy to use. We didn't keep all of the D characteristics though, Classic Mode allows you to use the convenient popup keyboard for saving data. Complex filenames are no longer limited to 16 characters, there's plenty of characters available to suit any filenames you might require.



ADVANCED MODE CONTAINS SEVERAL POWERFUL NEW FEATURES NOT AVAILABLE IN CLASSIC MODE.

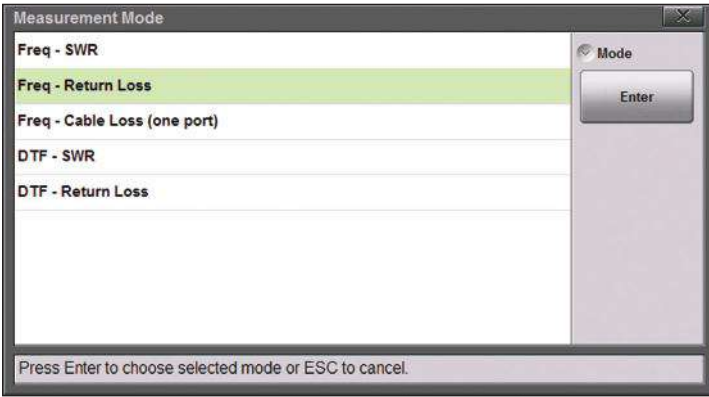
Advanced Mode

The Site Master S331L also offers a mode with more capability, we call it Advanced Mode. Advanced Mode has a much more modern look and feel to it, and many users will immediately appreciate the new Advanced Mode GUI and button layout/function. With Advanced Mode you also get some extra capabilities such as 8 markers instead of 6. There are 6 customizable touch screen icons for quick recalling of regularly used setups, making operation easier and more efficient.

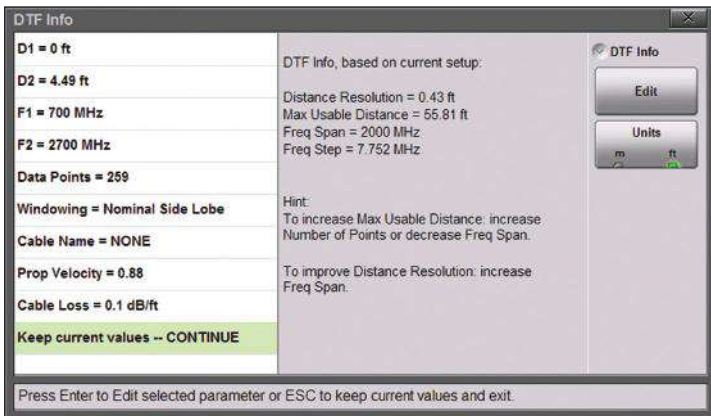
Site Master™ S331L Cable & Antenna Analyzer Features



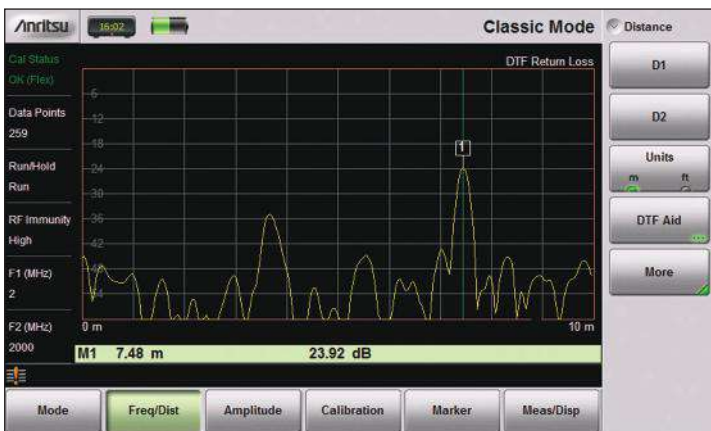
Cable & Antenna Analyzer



CLASSIC MODE SELECTOR SCREEN. SAME FAMILIAR LAYOUT AS D MODELS.



DTF AID PARAMETER SCREEN. SAME FAMILIAR LAYOUT AS D MODELS.



DISTANCE-TO-FAULT (DTF) MEASUREMENT SCREEN.

Classic Mode Measurement Selector Screen

The Site Master S331L classic mode was developed based on customer feedback. Many of our loyal customers have asked us to create an easy to use GUI like the one they have become accustomed to on the Site Master D models. The result of that valuable feedback is what we are proud to announce as Classic Mode.

Classic Mode Distance-to-Fault Aid Menu Screen

DTF Aid screen contains the same options in a similar layout format as the Site Master D models. Former Site Master D model users should have no difficulty setting DTF parameters in Classic Mode. We've even added some useful hints to help optimize the settings.

Classic Mode Distance-to-Fault Measurement

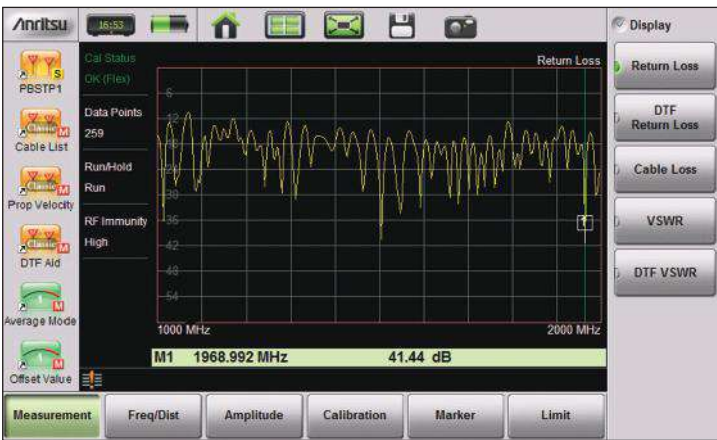
Here is an example of the Classic Mode Distance-to-Fault (DTF) measurement screen. Notice the Distance menu buttons labeled "D1" and "D2" just as they are in the D models.

These changes allow users experienced with older Site Master models to become immediately productive with the new S331L. Saves training costs and downtime.

Site Master™ S331L Cable & Antenna Analyzer Features



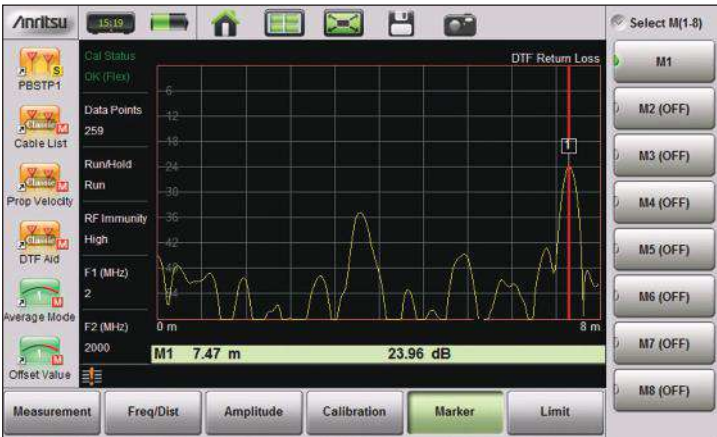
Cable & Antenna Analyzer



EASIER ACCESS TO DESIRED MEASUREMENT TYPES IN ADVANCED MODE

Advanced Mode Measurement Selector Screen

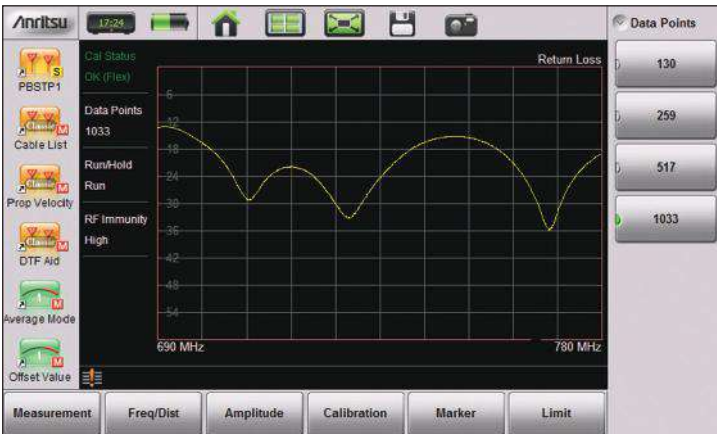
In Advanced Mode, users no longer need to press the Mode key before selecting desired measurement. Users are now able to select the desired measurement directly, simply by pressing the primary menu key “Measurement” then choose the desired measurement from the secondary menu keys on the right side.



8 MARKERS IN ADVANCED MODE PROVIDES MORE FLEXIBILITY

More Markers in Advanced Mode

In Advanced Mode you have 8 markers available to you. That’s 2 additional markers which can be used as you wish, either as additional regular markers, additional delta markers, or additional bounded markers. Provides more flexibility than Classic Mode.



WITH 1033 DATAPOINTS YOU CAN EXTEND THE MAXIMUM DISTANCE-TO-FAULT RANGE EASILY

2065 Datapoints

You have up to 2065 datapoints available for use. Increased datapoints can be used to provide better frequency resolution for your VSWR/RL measurements, or they can be used to extend the maximum distance range for your Distance-to-Fault (DTF) measurements without sacrificing distance resolution. A handy feature at your fingertips.

Site Master™ S331L Cable & Antenna Analyzer Features



Cable & Antenna Analyzer

Large, easy to see touch screen Keyboard

A large built-in popup keyboard saves valuable time in the field when entering trace names. For Cable and Antenna Analysis, an EZ Name Matrix can be customized for quickly naming your line sweeps



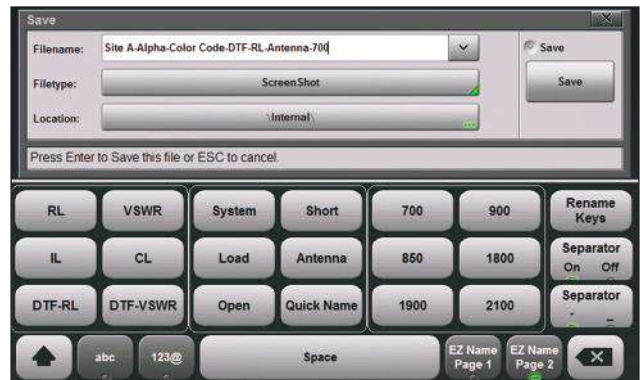
BUTTONS ARE LARGE, EASY TO SEE AND PRESS. MAKES FILE SAVING EASIER THAN EVER.

EZ Name Quick Naming Matrix saves valuable time

Unique to Anritsu, the customizable EZ Name Quick Naming Matrix saves valuable time. Users can preset up to 36 commonly used names. The resulting time saved is immediately beneficial. Save file names labeled with Site ID, Sector, Color Code, Measurement type, Termination and Frequency in less than 5 seconds. Now you can label the traces of the entire site in minutes instead of hours.



MOST COMMON SITE NAME REQUIREMENTS ARE PRE-PROGRAMMED INTO THE EZ NAME MATRIX. PAGE 1 OF 2 SHOWN.



18 ADDITIONAL CUSTOMIZABLE EZ NAME BUTTONS AVAILABLE ON PAGE 2.

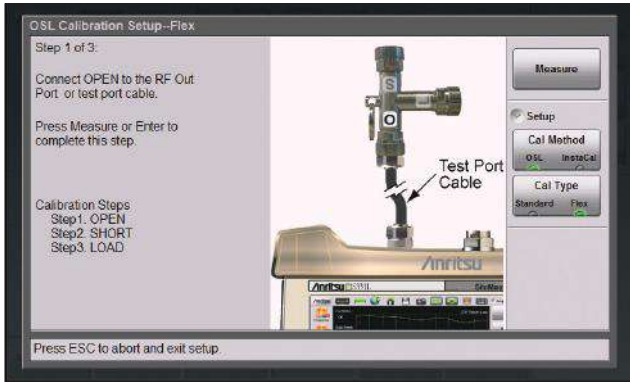
Site Master™ S331L Cable & Antenna Analyzer Features



Cable & Antenna Analyzer

OSL Calibration just got a lot easier!

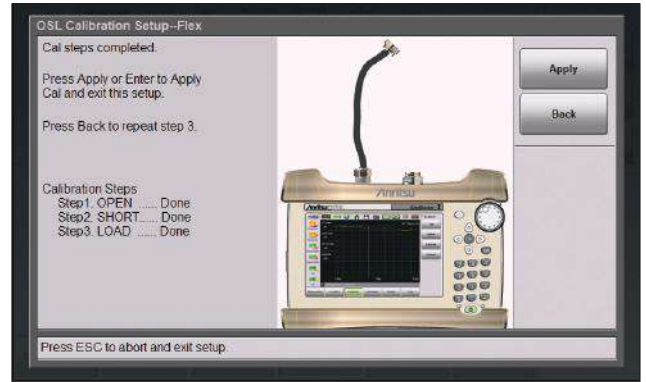
The S331L guides you through the entire OSL calibration process with not only text instructions, but with actual on screen photos to aid the user during the entire process. What could be easier? InstaCal™ of course, *psst...*we have that too!



ACTUAL INSTRUMENT ON-SCREEN INSTRUCTIONS.

Step 1

Connect Open as shown. S331L will automatically guide you through the entire OSL calibration sequence step by step with pictures and instructions on screen



ACTUAL INSTRUMENT ON-SCREEN INSTRUCTIONS.

Step 4

Complete!

Internal InstaCal/Power Meter

Quick, easy (one connection), and accurate calibrations anytime, anywhere with InstaCal. Measure power anytime with the built in power meter. With these two standard items built into the instrument, you will always be prepared for whatever scenario you may encounter.

InstaCal in action

Simply connect the test port cable to the InstaCal module, select InstaCal in the calibration menu, then the S331L does the rest automatically!



CLOSE UP VIEW OF INSTRUMENT TOP PANEL SHOWING INTERNAL INSTACAL MODULE

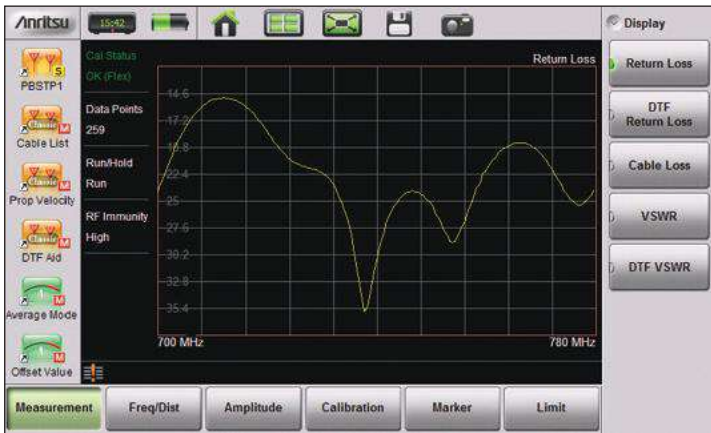


ACTUAL INSTRUMENT ON-SCREEN INSTRUCTIONS.

Site Master™ S331L Cable & Antenna Analyzer Measurements



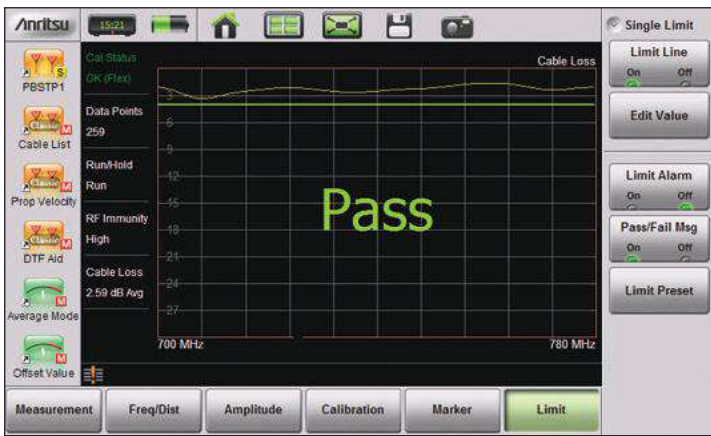
Cable & Antenna Analyzer



RETURN LOSS MEASUREMENT SCREEN (ADVANCED MODE)

Return Loss/VSWR Measurement

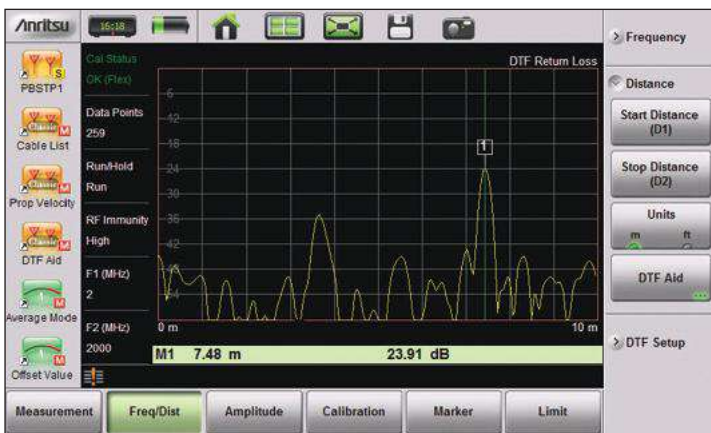
Poor Return Loss/VSWR can damage transmitters, reduce the coverage area, increase dropped and blocked calls, and lower data rates.



CABLE LOSS MEASUREMENT SCREEN (ADVANCED MODE)

Cable Loss Measurement

This an important commissioning check. Excessive loss reduces the coverage area and can mask return loss issues, creating false good readings later.



DISTANCE-TO-FAULT MEASUREMENT SCREEN (ADVANCED MODE)

Distance-to-Fault (DTF) Measurement

DTF can be used to identify and precisely locate faulty cables, components, or connector pairs with poor Return Loss/VSWR in meters or feet. Use 1033 points in Advanced mode to get more maximum distance without sacrificing resolution.

Site Master™ S331L Cable & Antenna Analyzer Measurements

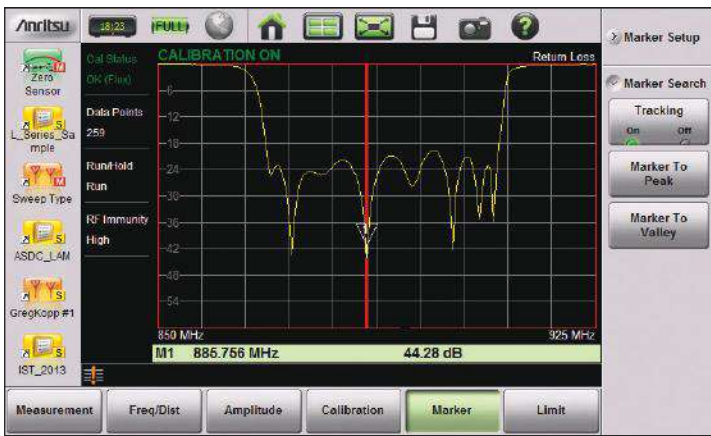


Cable & Antenna Analyzer



UPPER/LOWER LIMITS AND SEGMENTED LIMIT LINES SCREEN (ADVANCED MODE ONLY)

Feature additions/enhancements (Advanced Mode Only): Upper/lower limits and segmented limit lines are now available. Up to 42 segments for both upper and lower limits may be created (84 segments total).



MARKER PEAK/VALLEY TRACKING SCREEN (ADVANCED MODE ONLY)

Marker peak/valley tracking. This allows users to have the marker automatically track either the peak or valley response of a measurement, which is very useful when tuning devices.



SMITH CHART 50/75 Ω SELECTABLE SCREEN (ADVANCED MODE ONLY)

Smith Chart (50/75 Ω selectable) has been added as an advanced measurement type. 75 Ω Smith Chart measurements are shown.

Site Master™ S331L Cable & Antenna Analyzer Measurements



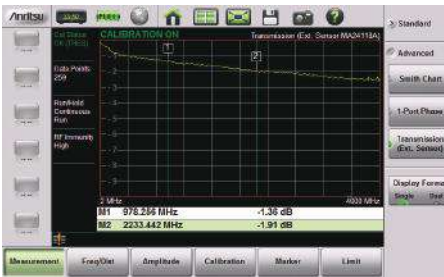
Cable & Antenna Analyzer



1-PORT PHASE MOVEMENT SCREEN (ADVANCED MODE ONLY)

Feature additions/enhancements (Advanced Mode Only):

1-Port phase measurement has been added as an advanced measurement type.



EXTERNAL SENSOR TRANSMISSION MEASUREMENT

To make more accurate cable loss measurements, especially for cables with more than 10 dB of loss, you can use the Transmission measurement with External Sensor.



DUAL SCREEN SPLIT HORIZONTALLY SCREEN (ADVANCED MODE ONLY)

Dual screen (split horizontally) has been added as an advanced measurement feature. Users may select any of the available measurement types when in dual screen mode.



VIP (VIDEO INSPECTION PROBE)

Dirty or damaged optical connectors can greatly effect network performance. Scratches, chips and contamination on optical fiber connector end faces reduce transmission quality and increase errors. This leads to additional I&M work and cost.

The G0306B Video Inspection Probe can reduce these issues by verifying the condition and cleanliness of connector end faces during the installation phase. The connector image and detailed PASS/FAIL status is displayed as defined by IEC 61300-3-35 ensuring quality and consistency from connector to connector, technician to technician.

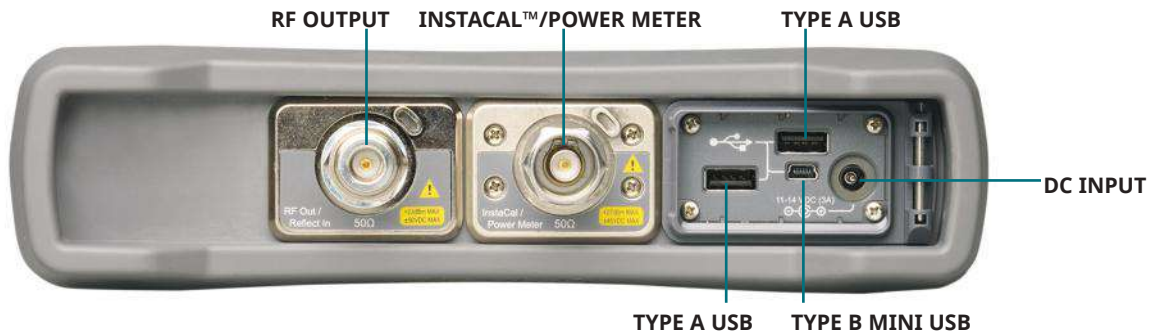


DHCP AND STATIC IP SCREEN (ADVANCED MODE ONLY)

DHCP and Static IP settings are now in the System menu. With the new 2000-1810-R USB to Ethernet LAN adapter, units are now able to be connected to via Ethernet.

Site Master™ S331L Cable & Antenna Analyzer Information

Physical Information



All Connectors are conveniently located on the top panel, leaving the sides clear for handheld use. Connectors have splash proof covers to provide additional protection from harsh elements



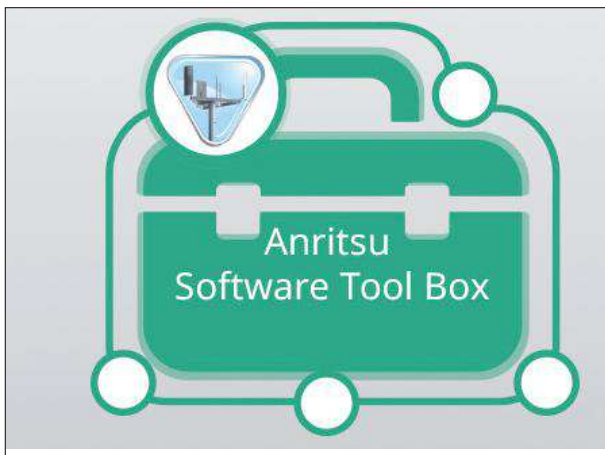
TILT BAIL IS INTEGRATED INTO THE SOFT CASE FOR BETTER SCREEN VIEWING

Site Master™ S331L Line Sweep Tools



Line Sweep Tools™ (for your PC) Smart Aligner Application (for Android)

- Collect** Sweeps from Anritsu line sweep gear
- Verify** That cables and antenna systems meet specifications and that the sweeps were done properly
- Report** Findings quickly to the standards required by contract



The Anritsu Tool Box

The Anritsu Tool Box (included on disc or freely downloadable at www.anritsu.com) is a convenient central location where Anritsu supporting software programs and online support options can be found for most of our handheld product portfolio. Simply choose the desired application that suits your needs. The Anritsu Tool Box comes with LST and grows as more Anritsu tool box programs are added.

Marker and Limit Line Presets

Presets make applying markers and a limit line to similar traces quick and easy. They only need to be set once, and recorded. After this, applying them to a similar trace requires only one button push. This speeds up trace processing and makes providing consistent marker and limit line settings easy.

Naming Grid

A naming grid function makes changing file names, trace titles, and trace subtitles from field values to those required by contract simple and quick. Once the naming grid is populated with user defined file name segments, a few simple button presses will then fill out the file, title, and sub-title names. Quickly applied to multiple traces, the naming grid can save time, increase efficiency and accuracy.

Report Generator

The report generator will create a professional PDF or HTML based report. Reports includes GPS¹, power level¹, company logo², instrument and calibration status along with a display of all open traces. It also may contain additional information such as addresses and phone numbers. HTML type reports may be post edited using programs such as Microsoft Word.

Line Sweep Tools (LST) is a free PC based program that increases productivity for people who deal with numerous Cable and Antenna traces every day. LST is the next generation of Anritsu’s familiar Handheld Software Tools (HHST) and shares its user interface, giving a new face to the term “ease of use.”

GPS Antenna Alignment Tool
www.muliwave.com

SmartAligner SN: 1217
SmartAligner PW: 2.9.60

Alignment Date: 2020-05-22 11:13:54
GPS Integrity: 79
Latitude: 43°50'57.638" N
Longitude: 79°42'32.918" W
Elevation: 237 m
Contractor: Multiwave Sensors

User Input
Port: 713-714-415-416-417-418
Technology: LTE 700 - HSPA 1.9

Site Alignment Results

Site: Sample Report
Report Date: 2021-01-18 @ 16:43:41

Antenna SN: 002359468
Antenna Type: SBNH-1065A
Carrier: Bell
Site: Sample Report
Sector: 1
Position: 3
AGL Height: 11.0 m (LASER)
Electrical Tilt: ▼ 3.0°

	MEASURED	TARGET	DIFFERENCE
Azimuth (True)	349.9°	350.0°	0.1
Tilt	▼ 1.2°	▼ 1.3°	0.1
Roll	▼ 0.7°	0.0°	0.7

Anritsu Gurus
123 Fourth St.
City, State
www.anritsu.com

2020-05-22 11:14:40 EDT

2020-05-22 11:15:04 EDT

2020-05-22 11:15:38 EDT

2020-05-22 11:15:41 EDT

Page 1 / 2

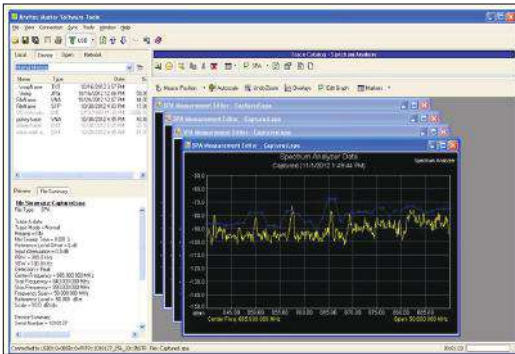
Smart Aligner Application

The Smart Aligner application, developed in partnership with Multiwave Sensors, is freely downloadable from the Google Play app store. This Android application imports results data from Multiwave Sensors antenna alignment tools and Anritsu’s Site Master cable and antenna analyzers to facilitate a quick creation of measurement results closeout reports in .pdf format. Closeout reports are required from contractors to network operators before payment is authorized. With the Smart Aligner app, these reports can be created on site and emailed directly from a smartphone speeding up the process.

Site Master™ S331L Line Sweep Tools



easyTest Tools™ (for your PC)



Cable Editor³

Instrument Cable Lists may be retrieved from the instrument, modified as required, and uploaded back into instrument.

Signal Standard Editor³

Signal Standard Lists may be retrieved from the instrument, modified as required, and uploaded back into instrument.

Distance to Fault⁴ (DTF)

Easily convert Return Loss or VSWR traces to Distance to Fault traces with one button press.

Measurement Calculator

Provides quick conversion between commonly used measurement units such as VSWR, RL, and others.

Capture: Plots to Screen, Database, *.dat, *.jpg

Connect: To PC using USB, Ethernet, Serial

Download: Lists/measurements and live traces to PC for storage and analysis.

Upload³: Lists/measurements from PC to instrument.

Supported File Types

Input: *.dat, *.vna, *.mna, *.pim, *.tm

Output: *.dat, *.vna, *.pim, *.tm, *.csv, *.bmp, *.jpg, *.png

¹Model dependent

²Optionally set by user

³Instrument type/model must match original

⁴Only *.dat and *.vna file types supported

easyTest Tools™

easyTest Tools allows users to create work instruction files on their PC, deliver these files by e-mail, and then display work instructions on the Site Master™ or Cell Master™ “E” series cable and antenna analyzers. These easyTest™ files provide step-by-step instructions for both the test setup and instrument operation.

easyTest works with the S331L, S331E, S332E, S361E, S362E, S820E, MT8212E, and MT8213E when operating in Cable and Antenna Analyzer mode.

Instrument Mode

Cable and Antenna Mode

PC Requirements

Anritsu's software tools runs on computers using Windows operating systems, specifically:

Windows XP, Service Pack 2 or higher, Windows Vista, Windows 7, 8, or 10.

PC must have at least 1 GB of RAM and 1 GB of available hard drive space.

Site Master™ S331L Ordering Information

Ordering Information



S331L
(Includes all items listed in description)

Description

Cable and Antenna Analyzer - 2 MHz to 4 GHz
 Internal InstaCal™ - 2 MHz to 4 GHz
 Internal Power Meter - 50 MHz to 4 GHz
 High Accuracy Power Meter (requires External USB Power Sensor, sold separately)
 GPS Location/System Time Sync (requires External GPS Module 2000-1723-R, sold separately)
 Optical connector inspection with IEC 61300-3-35 based Pass/Fail standard (requires USB Video Inspection Probe, sold separately)

Calibration and Extended Warranty Options

Warranty	Warranty with Z540 Calibration	Description
S331L-ES510	S331L-ES513	Warranty Extension to 5 Years, Return to Anritsu

Calibration Only Options

Option	Description
S331L-0098	Standard Calibration to ISO/IEC 17025:2005 and ANSI/NCSL Z540-1. Includes calibration certificate.
S331L-0099	Premium Calibration to ISO17025 and ANSI/NCSL Z540-1. Includes calibration certificate, test report and uncertainty data.

Standard Accessories (included with instrument)



Part Number	Description
2000-1676-R	Soft Carrying Case
2000-1691-R	Stylus with Coiled Tether
2000-1687-R	Torque Multiplier N(m)
40-187-R	AC-DC Adapter
806-141-R	Automotive Power Adapter, 12 VDC, 60 W
3-2000-1498	USB A/5-pin mini-B Cable, 305 cm (120 in)
	Standard Three-Year Warranty (battery one-year warranty) Certificate of Calibration and Conformance

Documentation (available at www.anritsu.com)



Part Number	Description
10100-00065	Product Information, Compliance, and Safety
11410-00616	Site Master S331L Technical Data Sheet
10580-00321	Site Master S331L User Guide
11410-00640	Site Master S331L Product Brochure (Includes information about additional Site Master models)
11410-00662	Site Master S331L Quick Fact Sheet
11410-00674	Cable and Antenna Analysis Troubleshooting Guide
10580-00253	Site Master S331L Maintenance Manual

Notes

• **United States**

Anritsu Americas Sales Company

450 Century Parkway, Suite 190, Allen, TX 75013 U.S.A.

Phone: +1-800-Anritsu (1-800-267-4878)

• **Canada**

Anritsu Electronics Ltd.

700 Silver Seven Road, Suite 120, Kanata, Ontario K2V 1C3, Canada

Phone: +1-613-591-2003

Fax: +1-613-591-1006

• **Brazil**

Anritsu Eletronica Ltda.

Praça Amadeu Amaral, 27 - 1 Andar
01327-010 - Bela Vista - Sao Paulo - SP, Brazil

Phone: +55-11-3283-2511

Fax: +55-11-3288-6940

• **Mexico**

Anritsu Company, S.A. de C.V.

Bldv Miguel de Cervantes Saavedra #169 Piso 1, Col. Granada
Mexico, Ciudad de Mexico, 11520, MEXICO

Phone: +52-55-4169-7104

• **United Kingdom**

Anritsu EMEA Ltd.

200 Capability Green, Luton, Bedfordshire, LU1 3LU, U.K.

Phone: +44-1582-433200

Fax: +44-1582-731303

• **France**

Anritsu S.A.

12 avenue du Québec, Immeuble Goyave,
91140 VILLEBON SUR YVETTE, France

Phone: +33-1-60-92-15-50

• **Germany**

Anritsu GmbH

Nemetschek Haus, Konrad-Zuse-Platz 1,
81829 München, Germany

Phone: +49-89-442308-0

Fax: +49-89-442308-55

• **Italy**

Anritsu S.r.l.

Via Elio Vittorini 129, 00144 Roma, Italy

Phone: +39-6-509-9711

Fax: +39-6-502-2425

• **Sweden**

Anritsu AB

Isafjordsgatan 32C, 164 40 KISTA, Sweden

Phone: +46-8-534-707-00

• **Finland**

Anritsu AB

Teknobulevardi 3-5, FI-01530 VANTAA, Finland

Phone: +358-20-741-8100

Fax: +358-20-741-8111

• **Denmark**

Anritsu A/S

c/o Regus Winghouse, Ørestads Boulevard 73, 4th floor,
2300 Copenhagen S, Denmark

Phone: +45-7211-2200

• **Russia**

Anritsu EMEA Ltd.

Representation Office in Russia

Tverskaya str. 16/2, bld. 1, 7th floor.

Moscow, 125009, Russia

Phone: +7-495-363-1694

Fax: +7-495-935-8962

• **Spain**

Anritsu EMEA Ltd.

Representation Office in Spain

Paseo de la Castellana, 141. Planta 5, Edificio Cuzco IV
28046, Madrid, Spain

Phone: +34-91-572-6761

• **United Arab Emirates**

Anritsu EMEA Ltd.

Anritsu A/S

Office No. 164, Building 17, Dubai Internet City
P. O. Box – 501901, Dubai, United Arab Emirates

Phone: +971-4-3758479

• **India**

Anritsu India Private Limited

6th Floor, Indique ETA, No.38/4, Adjacent to EMC2,
Doddanekundi, Outer Ring Road, Bengaluru – 560048, India

Phone: +91-80-6728-1300

Fax: +91-80-6728-1301

• **Singapore**

Anritsu Pte. Ltd.

11 Chang Charn Road, #04-01, Shriro House, Singapore 159640

Phone: +65-6282-2400

Fax: +65-6282-2533

• **Vietnam**

Anritsu Company Limited

Room No. 1635, 16th Floor, ICON 4 Tower, 243A De La Thanh Street,
Lang Thuong Ward, Dong Da District, Hanoi, Vietnam

Phone: +84-24-3760-6216

Fax: +84-24-6266-2608

• **P.R. China (Shanghai)**

Anritsu (China) Co., Ltd.

Room 2701-2705, Tower A, New Caohejing International
Business Center No. 391 Gui Ping Road Shanghai, 200233, P.R. China

Phone: +86-21-6237-0898

Fax: +86-21-6237-0899

• **P.R. China (Hong Kong)**

Anritsu Company Ltd.

Unit 1006-7, 10/F., Greenfield Tower, Concordia Plaza,
No. 1 Science Museum Road, Tsim Sha Tsui East,
Kowloon, Hong Kong, P.R. China

Phone: +852-2301-4980

Fax: +852-2301-3545

• **Japan**

Anritsu Corporation

8-5, Tamura-cho, Atsugi-shi, Kanagawa, 243-0016 Japan

Phone: +81-46-296-6509

Fax: +81-46-225-8352

• **Korea**

Anritsu Corporation, Ltd.

5FL, 235 Pangyoyeok-ro, Bundang-gu, Seongnam-si,
Gyeonggi-do, 13494 Korea

Phone: +82-31-696-7750

Fax: +82-31-696-7751

• **Australia**

Anritsu Pty. Ltd.

Unit 20, 21-35 Ricketts Road, Mount Waverley, Victoria 3149, Australia

Phone: +61-3-9558-8177

Fax: +61-3-9558-8255

• **Taiwan**

Anritsu Company Inc.

7F, No. 316, Sec. 1, NeiHu Rd., Taipei 114, Taiwan

Phone: +886-2-8751-1816

Fax: +886-2-8751-1817



Anritsu utilizes recycled paper and environmentally conscious inks and toner.



® Anritsu All trademarks are registered trademarks of their respective owners. Data subject to change without notice. For the most recent specifications visit: www.anritsu.com

11410-00978, Rev. L Printed in United States 2021-03
©2021 Anritsu Company. All Rights Reserved.