

Anritsu Advancing beyond

Signalling Tester

MD8430A

Rapid Test Designer (RTD) MX786201A



testforce

Early Support for Developing LTE-Advanced Pro (CA/MTC) Chipsets and Mobile UEs

LTE-Advanced Pro is faster than LTE-Advanced and becoming effect radio communications network.

The Signalling Tester MD8430A is a key LTE base station simulator for developing LTE/LTE-Advanced/LTE-Advanced Pro-compliant chipsets and mobile UEs.

Using its extensive experience in 3G markets, Anritsu has developed the MD8430A as a powerful LTE-Advanced Pro protocol R&D test solution to help developers bring LTE/LTE-Advanced/LTE-Advanced Pro terminals to market as fast as possible.

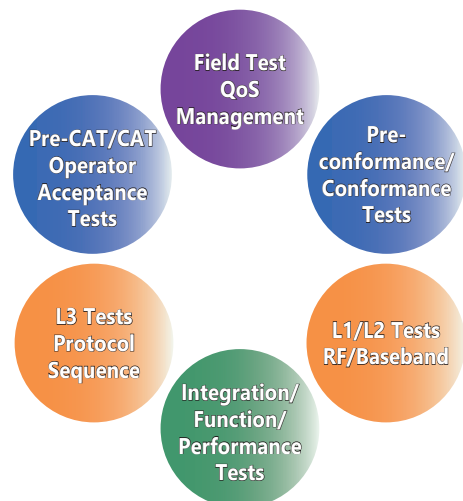


Key Features

- Support LTE-Advanced Pro testing with 6CCs Carrier Aggregation (CA) and less
- Early support 3GPP LTE-Advanced FDD/TDD Release 12
 - TDD-FDD joint operation including CA
 - DL 256QAM
 - LTE MTC (Machine Type Communication)
- One MD8430A support CA handover, 4x4 MIMO, 8x4 MIMO, etc.
- Available to testing of full digital fading
- Support DL 2 Gbps, UL 300 Mbps data throughput
- Inter-RAT tests making effective use of previous MD8480C (UTRAN/GERAN), and MD8475A (CDMA2000) hardware investments
- Optimized investment from first R&D to protocol conformance testing
- Full development and analysis toolset cuts L1, L2 and L3 scenario development time and costs
- Support UMTS Release 10, HSPA Evolution, GSM/GPRS/EGPRS
- Supports 5G NSA protocol testing is possible by using in combination with MT8000A

Main Applications

- Coding/Decoding tests (RF/Baseband)
- Protocol sequence tests
- Throughout and stress tests (Performance test)
- Intra-RAT/Inter-RAT performance tests
- LTE Pre-conformance/Conformance tests
- Network interoperability tests
- LTE network operator acceptance tests (CAT)
- Troubleshooting field test problems
- UE QC inspection
- W-CDMA/HSPA protocol sequence tests





Main Test Functions

- LTE-Advanced Intra-RAT CA handover test (Hard handover)
- LTE ↔ UTRAN/GERAN Inter-RAT handover test
- eMBMS test
- Digital baseband slow clock test
- Protocol sequence analysis (Log analysis)
- Throughput monitoring
- UE Scheduling function (Time/MCS/Lowest RB/RB)
- H-ARQ Test (ACK/NACK/DTX)
- VoLTE test (SPS, TTI Bundling, DRX, RoHC, CA+VoLTE)
- W-CDMA/HSPA handover test
- Dual Connectivity
- Licensed Assisted Access (LAA)
- Cellular Internet of Things (C-IoT) test (Cat-M/NB-IoT)
- NTN NB-IoT (GEO) test

Supports Newest UE Categories

The MD8430A follows UE categories defined on 3GPP specifications, and will support new future categories. See page 14; UE category table - Signalling Tester MD8430A Specifications for detail.

Basic Functions (LTE-Advanced)

- Transmit Downlink (DL) signal (Up to 6 GHz)
- Receive Uplink (UL) signal (Up to 6 GHz)
- Call processing
- Transmit Power Control (TPC)
- Baseband interface
- DL 2×2/4×2 MIMO (Test Model: ETM)
- DL 4×4/8×2/8×4 MIMO (Test Model: ETM)
- UL 2×2 MIMO (Test Model: ETM)
- CA 2CCs/3CCs/4CCs/5CCs/6CCs (Test Model: ETM)
- Ciphering (option)

See page 6 for specifications of MD8430A models.

MD8430A

Signalling Tester

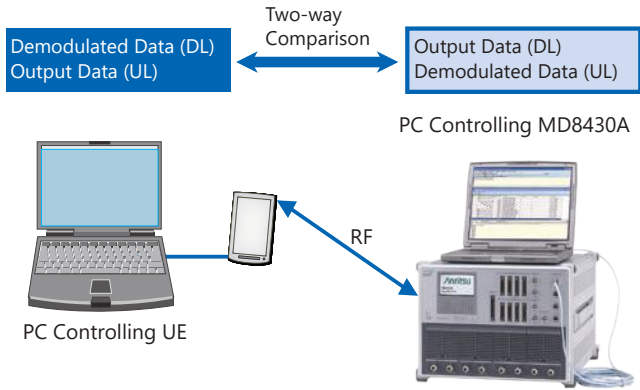
Rapid Test Designer (RTD) MX786201A



For Developing LTE-Advanced Pro Chipsets and Mobile UEs RF/Baseband Tests

Coding/Decoding Test

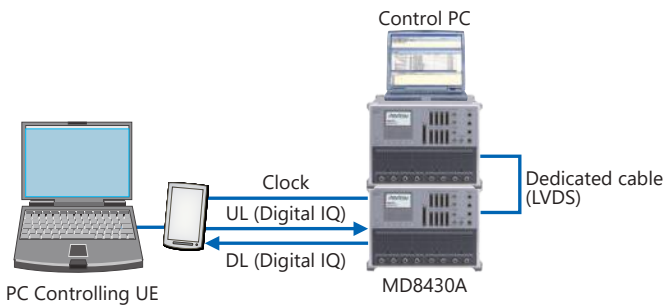
Coding/Decoding tests of LTE-Advanced Pro terminals are performed by making the RF connections shown in the following diagram.



Coding/Decoding Test Example (RF, Non-call-processing Test)

The MD8430A supports digital baseband I/O as standard functions. Using the baseband interface offers high-reproducibility coding/decoding tests free from the RF section, supporting stable evaluation of LTE chipset baseband performance.

Moreover, LTE coding/decoding tests are supported because the baseband chip can be evaluated using a slower clock than the clock frequency. And connecting the second MD8430A fading function to the digital baseband interface supports slow clock evaluations in a fading environment, which are difficult to perform with an RF fading simulator.



Slow Clock Test Setup (Digital Baseband, Fading)

Easy MIMO Test Configuration Settings

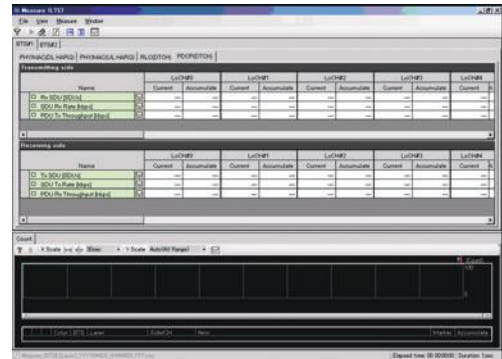
The MD8430A has 8 main and sub RF connectors as well as 8 digital IQ connectors as standard equipment for use with the LTE Control Software MX843010E to easily configure and monitor various settings, including RF parameters, channel power, MIMO, fading, connector selections, frame timing, BTS cell selections, etc.



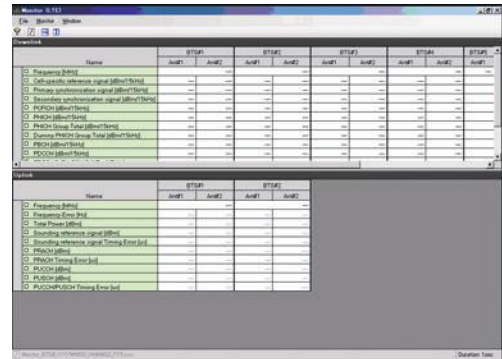
Setup Screen Example

Fully Versatile L1/L2 Monitoring Functions

The MX843010E software supports LTE development by processing large volumes of low-layer data at very high speeds using a full line of versatile power monitoring, throughput monitoring and log analysis functions. The Measure (Counter) functions can monitor Layer 1/2 (L1/L2) throughputs in real time by counting parameter values such as ACK/NACK/DTX/CQI.



Measurement (Counter and Throughput) Screens



Monitor Screen Example

Complete LTE-Advanced Pro Protocol Test Environment

Intelligent Test Creation

The Rapid Test Designer (RTD) MX800050A/MX786201A software tools gives users power to create tests that cannot be done with traditional language based tools. RTD Supports L1/L2/L3 testing using Lower Layer Configuration library and Layer 3 procedure library of UE development.

Moreover, each procedure auto-sets the connection with the lower Layers (L1/L2) based on full compliance with the 3GPP standards.

RTD can simulate LTE ↔ UTRAN Inter-RAT and LTE ↔ CDMA2000 Interworking by connecting MD8430A and/or MD8475B.

The Reference Library test cases provides a reference to build the customized test cases and libraries with ease.

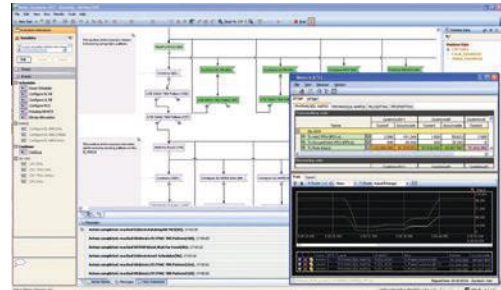
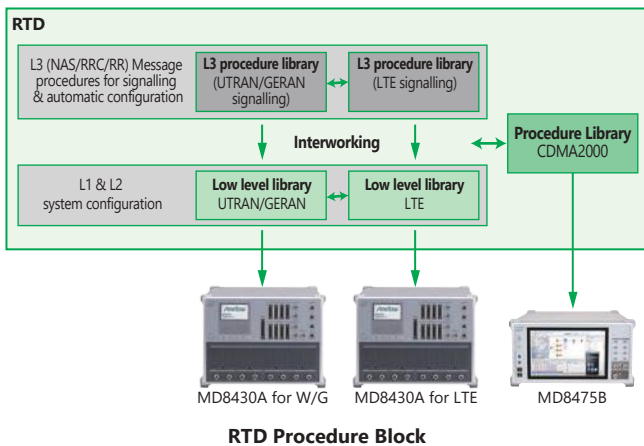
Cuts Test Case Development Time

The RTD GUI offers intuitive test case creation by linking procedures with parameters, such as network conditions and message data, at easy-to-understand setting screens, quickly increasing the number of working test cases.

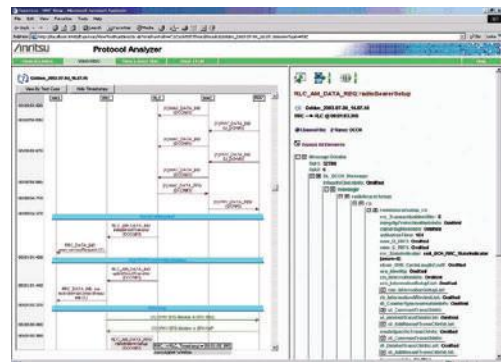
In addition, the Built-in Analyzer function checks for programming errors prior to testing, which can start immediately without recompiling after editing and changing settings.

Flexibility in Testing & Analysis

When the test finishes the execution, the RTD provides a preliminary judgment against predetermined criteria. This avoids the need to study complex message sequences and can show a test outcome explained in a local language. The Integrated protocol analyzer with RTD supports very detailed Message Sequence Analysis and provides a facility to export the Protocol Test logs in to HTML format which can be viewed at any PC with a Browser without a RTD license.



Test Execution Screen (RTD)



Log Analysis Screen (RTD)



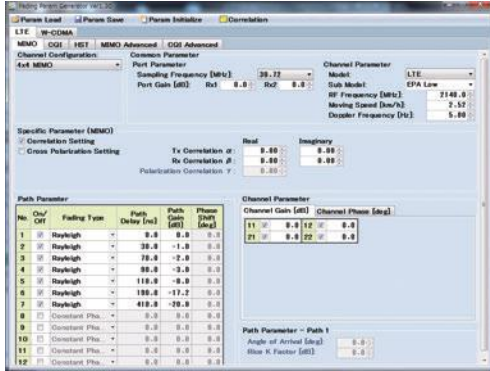
Efficient UE Integration and Performance Tests

Testing Throughput for Various Conditions

The MD8430A supports the latest UE categories with download speeds of 2 Gbps and uploads speeds of 300 Mbps.

The bundled sample scenarios make it easy to change parameters such as bandwidth, scheduling, HARQ, etc., for testing LTE throughputs under various conditions.

In addition, combination with second MD8430A fading function supporting LTE MIMO via the dedicated digital interface simplifies complex power control procedures for easy throughput testing in a fading environment with simple test setup.

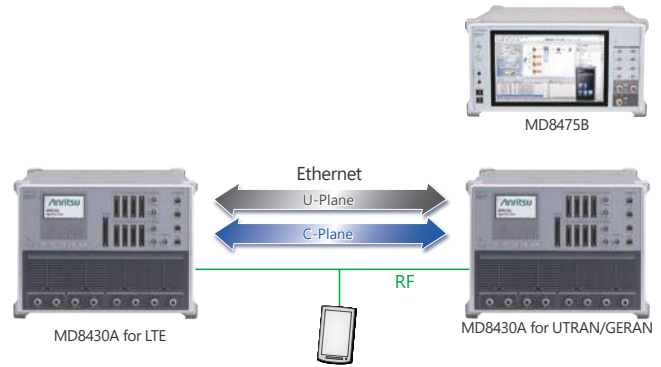


Fading Setting Screen (MF6900A Fading Simulator)

Handover Tests Optimizing Hardware Investment

The MD8430A supports up to six cells (Four active cells) allowing handover tests between two LTE BTS with one tester. In addition, LTE-UTRAN/GERAN Inter-RAT handover tests are supported by connecting 2boxes of MD8430A.

With the Signalling Tester MD8475B, CDMA2000 Interworking tests are supported too, maximizing support for both worldwide communications technologies and investment in hardware.



LTE-UTRAN/GERAN Handover Test Setup

Specifications of Signalling Tester MD8430A Model (ETM)

Model/Name	MD8430A-035 LTE Enhanced Test Model (ETM)
Interface	RF, Digital IQ, Baseband Fading*1
Frequency Band	Max. 20 MHz
UE Category	Category 1, 2, 3, 4, 5, 6, 7, 9*2, 10*2, 11*2, 12*2 DL Category M1, 0, 1 bis, 4, 6, 7, 9*2, 10*2, 11*2, 12*2, 13*2, 15*2, 16*2, 18*2, 19*2, 20*2 UL Category M1, 0, 1 bis, 3, 5, 7, 13, 15, 20 NB Category NB1
Max. Data Rate (DL)	1 Gbps (PHY: 2 Gbps)
Max. Data Rate (UL)	300 Mbps
MIMO	2 × 2 MIMO 4 × 2 MIMO 4 × 4 MIMO*3 8 × 2 MIMO 8 × 4 MIMO*4
Max. No. of Base Station	Active + adjacent BTS: 8*5 (Max. Active BTS: 6)
Hard Handover (including at MIMO)	Available*6
Carrier Aggregation: No. of Component Carriers (DL)*7	6*8, *9, *10
Carrier Aggregation: No. of Component Carriers (UL)*7	3*11

*1: Requires MD8430A-067 and two MD8430A sets for Baseband Fading. (ETM & ETM or ETM & BTM)

*2: Requires two MD8430A sets. (ETM & ETM or ETM & BTM)

*3: Requires MD8430A-075.

*4: Requires MD8430A-076.

*5: Requires two MD8430A sets. (ETM & ETM)

*6: For inter-frequency handover with Carrier Aggregation, requires two MD8430A sets. (ETM & ETM or ETM & BTM)

*7: Requires MD8430A-085.

*8: DL 4 CA operation requires MD8430A-088, DL 5 CA operation requires MD8430A-089, and DL 6 CA operation requires MD8430A-044.

*9: For 3 CA MIMO and 4 CA MIMO, requires two MD8430A sets. (ETM & ETM or ETM & BTM)

*10: For DL 5 CA MIMO and 6 CA MIMO, requires two MD8430A sets (only ETM 2 sets configuration)

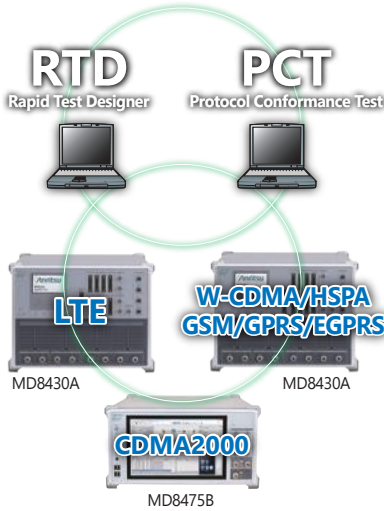
*11: UL 3 CA operation requires MD8430A-045.

Powerful Platform for Both Conformance and Operator Acceptance Tests

Optimized Hardware Investment

The MD8430A supports to design for early chipset and mobile UE, function tests, and performance tests ranging from carrier acceptance tests to protocol conformance tests as well as retrofit upgrades between models allows developers to tailor their hardware investment to current needs with future flexible upgrade options.

The Protocol Conformance Test Toolkit (PCT) with MD8430A and GCF/PTCRB approved TTCN test package provide an optimum environment for LTE protocol conformance testing. Hence, a Single Hardware Platform that extends its usage from Platform development to Conformance Testing and Operator Acceptance Test.



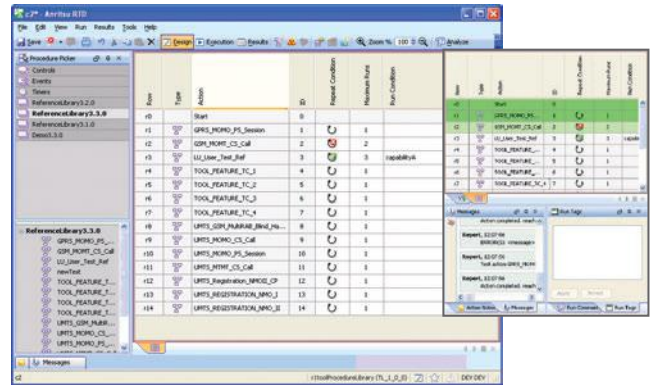
Full Line of Versatile L3 Analysis Tools

Instant Firmware Switching

Because the MD8430A saves up to ten firmware versions, the right firmware is selected easily at startup. There is no need to install/uninstall firmware when executing a test case that determines the firmware version.

Powerful Automated Testing

The RTD software supporting the UE control interface makes it easy to setup automated test systems. Furthermore, multiple test cases can be executed continuously and test reports generated automatically, and many functions, including repeat testing under different conditions with multiple settings, can be automated, offering carriers, etc., an ideal turnkey solution for acceptance testing.



Example of Test Case Campaign

Easy Test Case Maintenance

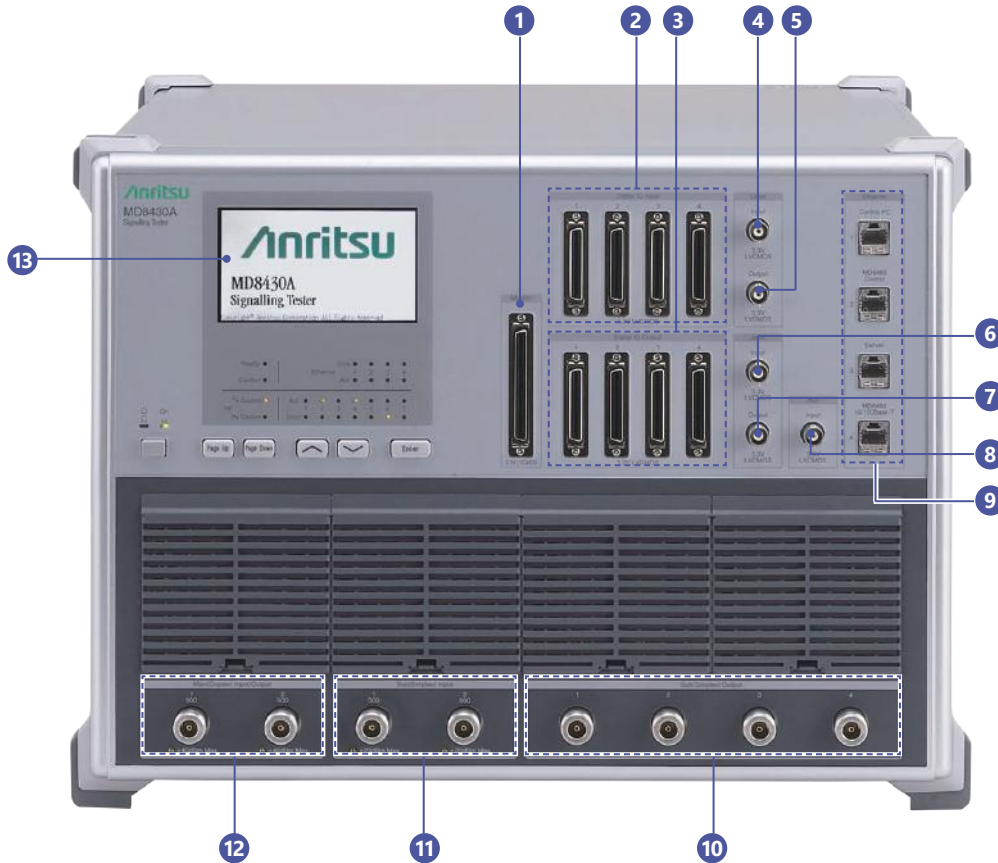
Test cases created by the RTD software can be updated easily when new 3GPP standard evolves, reducing the need for re-editing. In addition, guaranteed test case compatibility even when the MD8430A firmware version is changed removes the need to recompile, etc., resulting in greatly reduced costs for maintaining test cases to support regression testing when rolling out new terminals and performing pre-IOT to assure compatibility with network equipment worldwide.



Used as a component for test system

Signalling Tester MD8430A Panel Layout

Front Panel



1 Monitor

Connector outputting signal internal data and status to accessory Monitor Board

2 Digital IQ Input

Connector for inputting digital IQ signal

3 Digital IQ Output

Connector for outputting digital IQ signal

4 Clock Input

BNC connector for inputting system clock to operate using external clock

5 Clock Output

BNC Connector for outputting system clock

6 Sync Input

BNC Connector for inputting and operating using external sync signal

7 Sync Output

BNC Connector for outputting sync signal

8 Aux Input

BNC Input connector reserved for adding future functions

9 Ethernet

- (1) Ethernet connector for connecting external PC controller
- (2) Ethernet connector to control MD8480C, connecting with 'Control PC' connector on MD8480C
- (3) Ethernet connector for server
- (4) Ethernet connector for connecting MD8480C using '10/100BASE-T' connector

10 Sub (Simplex) Output

N connector for RF output

11 Sub (Simplex) Input

N connector for RF input

12 Main (Duplex) Input/Output

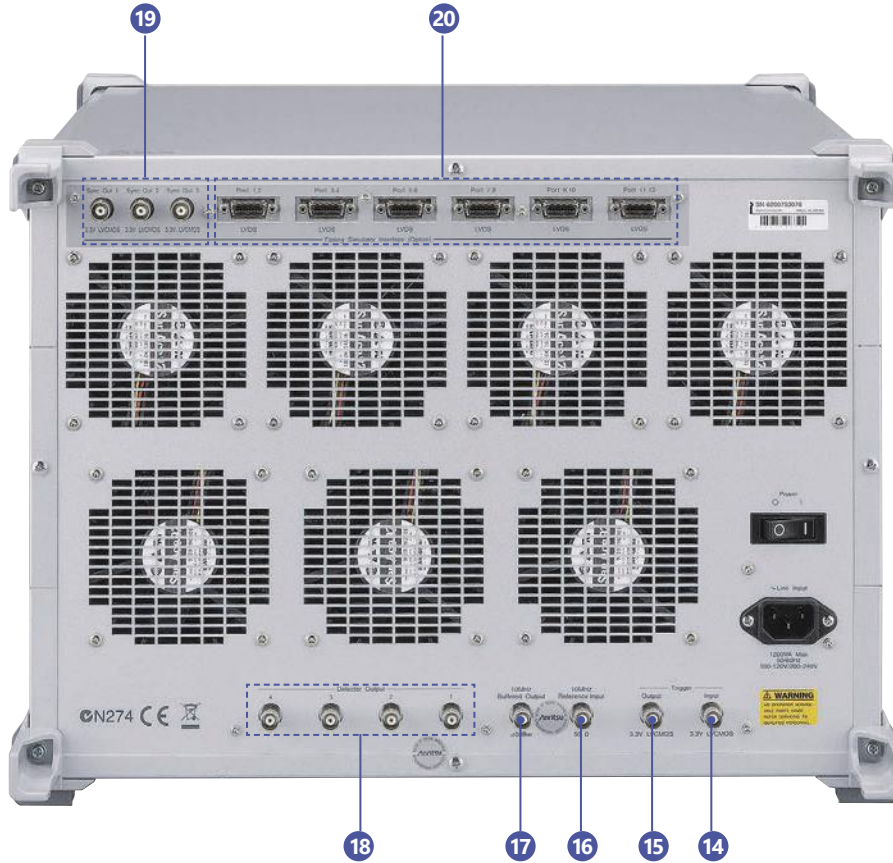
N connector for RF input/output

13 LCD

Screen displaying equipment information such as firmware selection and maintenance software screens

Signalling Tester MD8430A Panel Layout

Rear Panel



- 14 Trigger Input**
BNC Connector for inputting a trigger signal from external equipment
- 15 Trigger Output**
BNC Connector for outputting event timing to external equipment
- 16 10 MHz Reference Input**
BNC Connector for inputting external reference signal
- 17 10 MHz Buffered Output**
BNC Connector for outputting equipment reference signal

- 18 Detector Output**
BNC Connector for outputting profile signal of RF signal power
- 19 Sync Out**
BNC Connector for outputting sync signal to Fading Simulator
- 20 LVDS**
Connector for connecting Fading Simulator using Digital IQ

Signalling Tester MD8430A Configurations

Test Models/Options/Software

Test Models

Basic Test Model (BTM)	MD8430A-025
M2M Test Model (MTM)	MD8430A-027
LTE Enhanced Test Model (ETM)	MD8430A-035

Choose one of the above three models.

Test Model Upgrade

Required option when upgrading to higher order model.

Upgrade from Function Test Model (FTM)

LTE FTM to ETM Upgrade Kit	Z1670A
LTE FTM to ETM Upgrade Kit (FO)	Z1789A

Upgrade from Standard Test Model (STM)

LTE STM to ETM Upgrade Kit	Z1671A
LTE STM to ETM Upgrade Kit (FO)	Z1790A

Upgrade from Performance Test Model (PTM)

LTE PTM to ETM Upgrade Kit	Z1672A
LTE PTM to ETM Upgrade Kit (FO)	Z1791A

Upgrade from Basic Test Model

LTE BTM to ETM Upgrade Kit	Z1873A
LTE BTM to MTM Upgrade Kit	Z1976A

Upgrade from M2M Test Model

LTE MTM to ETM Upgrade Kit	Z1977A
----------------------------	--------

Options

Extended Frequency Range to 3.8 GHz MD8430A-002

Required software option when extending maximum frequency of MD8430A (Tx/Rx) to 3.8 GHz.

Enhanced DL Frequency Bandwidth Option MD8430A-004

Required software option when extending downlink frequency bandwidth of MD8430A (Tx) to 60 MHz.

Extended Frequency Range to 3.8 GHz Hardware 2 MD8430A-005

Required hardware option when extending maximum frequency of MD8430A (Tx/Rx) to 3.8 GHz. (Test Model: BTM, ETM)

Extended Frequency Range to 6 GHz MD8430A-006

Required software option when extending maximum frequency of MD8430A (Tx/Rx) to 6 GHz.

Extended Frequency Range to 6 GHz Hardware MD8430A-007

Required hardware option when extending maximum frequency of MD8430A (Tx/Rx) to 6 GHz.

NTN NB-IoT (GEO) MD8430A-043

Required software option for executing NTN NB-IoT(GEO) function.

LTE DL 6 Carrier Aggregation Option MD8430A-044

Option for adding Carrier Aggregation (CA) function supporting transmission of up to six component carriers on downlink.

LTE UL 3 Carrier Aggregation Option MD8430A-045

Option for adding Carrier Aggregation (CA) function supporting reception of up to three component carriers on uplink.

W-CDMA Fading Option MD8430A-052

Required software option when W-CDMA fading testing.

SCME Fading Option MD8430A-053

Required software option when SCME fading testing.

LTE 2 × 2 MIMO Fading Option MD8430A-055

Required software option when LTE 2×2 MIMO fading testing.

LTE 4 × 2 MIMO Fading Option MD8430A-056

Required software option when LTE 4×2 MIMO fading testing.

LTE 4 × 4 MIMO Fading Option MD8430A-057

Required software option when LTE 4×4 MIMO fading testing.

LTE 8 × 2 MIMO Fading Option MD8430A-058

Required software option when LTE 8×2 MIMO fading testing.

LTE 8 × 4 MIMO Fading Option MD8430A-059

Required software option when LTE 8×4 MIMO fading testing.

LTE FDD Option MD8430A-060

Required option when simulating 3GPP LTE FDD.

LTE TDD Option MD8430A-061

Required option when simulating TD-LTE.

LTE Enhanced MTC Option MD8430A-062

Required option when simulating LTE eMTC.

Narrow Band IoT Option MD8430A-063

Required option when simulating NB-IoT.

LTE Anchor For 5G NSA Option MD8430A-064

Software option for Protocol tests and IP evaluations using the 5G NSA in coordination with the MT8000A.

W-CDMA Option MD8430A-065

Required option when simulating W-CDMA.

GSM Option MD8430A-066

Required option when simulating GSM.

RF/Fading Driver Option MD8430A-067

Required software option when extending RF for MD8430A-025 BTM and executing the fading function (MD8430A-055, 056, 057, 058)

HSPA Multi Carrier Option MD8430A-070

Required option when HSPA multi carrier testing.

W-CDMA/GSM Ciphering Option MD8430A-071

Option for adding ciphering function for W-CDMA, GSM and GPRS. Supporting KASUMI and SNOW 3G to W-CDMA. A5/1, A5/2, A5/3 and A5/4 to GSM. GEA1, GEA2, GEA3 and GEA4 to GPRS.

LTE Licensed Assisted Access (LAA) Option MD8430A-072

Required software option for executing LTE Licensed Assisted Access function.

LTE Dual Connectivity Option MD8430A-073

Required software option for executing Dual Connectivity function.

LTE DL 4 × 4 MIMO Option MD8430A-075

Required software option when LTE 4×4 MIMO testing.

LTE DL 8 × 4 MIMO Option MD8430A-076

Required software option when LTE 8×4 MIMO testing.

LTE Internal Server Option MD8430A-077

Required option for IP data communications using the built-in server. IP Data Throughput tests up to 1.6 Gbps are supported.

LTE UL 2 × 2 MIMO Option MD8430A-078

Required software option when LTE UL 2×2 MIMO testing.

LTE UL 256QAM Option MD8430A-079

Required software option when LTE UL 256QAM testing.

LTE Ciphering Option MD8430A-080

Option for adding ciphering function supporting EEA0, EEA1, and EEA2 (TS 33.401, TS 36.323) algorithms to LTE.

LTE ROHC Option MD8430A-081

Option for adding LTE ROHC function supporting RTP/UDP/IP (RFC 3095, RFC 4815), UDP/IP (RFC 3095, RFC 4815), ESP/IP (RFC 3095, RFC 4815), and IP (RFC 3843, RFC 4815).

Required this option for VoLTE testing.

LTE MBMS Option MD8430A-082

Option for adding LTE MBMS function supporting (P) MCH Transmission Scheduling, MCCH Message Transmission, MSI MAC control element Transmission and MTCH Message Transmission described in 3GPP (TS 36.211, TS36.221).

Signalling Tester MD8430A Configurations

Test Models/Options/Software (Cont'd)

LTE ZUC Ciphing Option MD8430A-083

Option for adding ciphing function supporting EEA3 and EIA3 (TS 33.401, TS 35.221) algorithms to LTE.

LTE Carrier Aggregation Option MD8430A-085

Option for adding Carrier Aggregation (CA) function supporting transmission of up to two component carriers on downlink.

Ciphing Option MD8430A-086

Option for adding ciphing function supporting EEA0, EEA1, EEA2, EEA3 and EIA3 (TS 33.401, TS 35.221, TS 36.323) algorithms to LTE.

LTE CoMP Option MD8430A-087

Required software option when 3GPP Release 11 CoMP feature. It is available to test Dynamic Point Selection.

LTE DL 4 Carrier Aggregation Option MD8430A-088

Option for adding Carrier Aggregation (CA) function supporting transmission of up to four component carriers on downlink.

LTE DL 5 Carrier Aggregation Option MD8430A-089

Option for adding Carrier Aggregation (CA) function supporting transmission of up to five component carriers on downlink.

CDMA2000® is a registered trademark of the Telecommunications Industry Association (TIA-USA).

Software

LTE Control Software MX843010E

Software for simulating L1 and L2 with test cases in C. (Test Model: ETM)

W-CDMA/GSM Control Software MX843070E

Software for simulating L1 and L2 with test cases in C. (Test Model: W-CDMA/GSM)

Rapid Test Designer (RTD) MX800050A/MX786201A

Software for simulating L1 to L3 with test cases described by GUI for automating testing, analyzing test cases and creating reports.

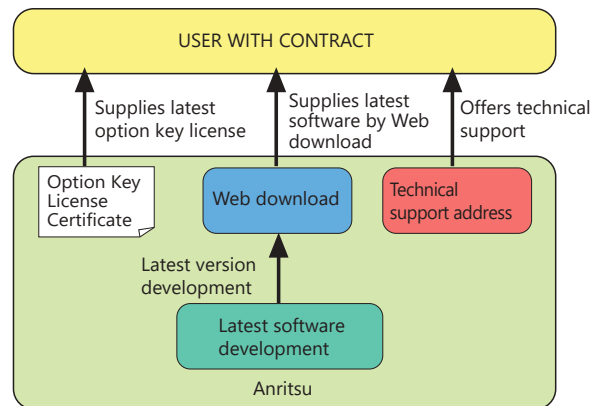
Software Maintenance Contract

Service PrAovided

- Contract for adding/revising software functions in line with 3GPP revisions
- Technical support for troubleshooting user problems

Annual Support Service (1 year)

Option providing 1 year of service support for MD8430A test functions including web downloads of latest software and technical enquiries. Services depend on option configuration.



MD8430A Support Services

MD8430A Support (FDD)

1 Year Support Service LTE FDD (ETM) MD8430A-SS135

MD8430A Support (TDD)

1 Year Support Service LTE TDD (ETM) MD8430A-SS136

MD8430A Support (NTN NB-IoT (GEO))

1 Year Support Service for NTN NB-IoT (GEO) MD8430A-SS143

MD8430A Support (W-CDMA/GSM)

1 Year Support Service W-CDMA/GSM MD8430A-SS170

MD8430A Support (LTE eMTC)

1 Year Support Service for LTE eMTC MD8430A-SS171

MD8430A Support (NB-IoT)

1 Year Support Service for NB-IoT MD8430A-SS172

LTE Control Software Support MX843010E

1 Year Support Service (Test Model: ETM) MX843010E-SS120

Signalling Tester MD8430A Specifications

Reference Oscillator	Reference Frequency	10 MHz
	Activation Characteristics	$\pm 5 \times 10^{-7}$ (2 minutes after turning on the power) $\pm 5 \times 10^{-8}$ (5 minutes after turning on the power) At 25°C, Based on the frequency 24 hours after turning on the power
	Aging Rate	$\pm 1 \times 10^{-8}$ /day (Specification per day, based on the frequency 48 hours after turning on the power) $\pm 1 \times 10^{-7}$ /year (Specification per day, based on the frequency 10 days after turning on the power)
	Temperature Characteristics	$\pm 2 \times 10^{-8}$ (0°C to 45°C) Based on the frequency at 25°C
	External Reference Input	Frequency: 10 MHz Operating range: ± 1 ppm Input level: -15 dBm \leq level \leq $+20$ dBm (50Ω, AC coupling) Connector: BNC-J, 50Ω (nominal)
	Internal Reference Output	Frequency adjusted at shipment: 10 MHz ± 0.02 ppm Output level: ≥ 0 dBm (50Ω, AC coupling) Connector: BNC-J, 50Ω (nominal)
Transmission Signal	Maximum Output Level	Main connector: -40 dBm (Maximum setting level at Main connector: -20 dBm) Sub connector: 0 dBm
	Level Accuracy	± 1.5 dB (350 MHz \leq Frequency \leq 3800 MHz) ± 2.0 dB (3800 MHz < Frequency \leq 6000 MHz) Main connector: -113 dBm \leq Level \leq -40 dBm Sub connector: -113 dBm \leq Level \leq 0 dBm After calibration, 18°C to 28°C, for calibration CW
	Frequency	LTE: 350 MHz to 3.0 GHz, 350 MHz to 3.8 GHz (with MD8430A-002), 350 MHz to 6.0 GHz (with MD8430A-006) W-CDMA: 400 MHz to 3.0 GHz, 400 MHz to 3.8 GHz (with MD8430A-002/006) GSM: 400 MHz to 2.0 GHz Setting resolution: 100 kHz
	Access Method	LTE: OFDMA, W-CDMA: CDMA, GSM: TDMA
	Modulation Method	LTE: QPSK, 16QAM, 64QAM, 256QAM W-CDMA: QPSK, 16QAM, 64QAM GSM: GMSK, 8PSK
	Modulation Accuracy	LTE: $\leq 2\%$, Sub output: 0 dBm, LTE (OFDM, 64QAM, 20 MHz band) W-CDMA: $\leq 3.5\%$, Sub output: 0 dBm, W-CDMA (transmitting CPICH, ICH) GSM: $\leq 1.5\text{deg.}$, Sub output: 0 dBm, GMSK $\leq 3.5\%$, Sub output: 0 dBm, 8PSK * At 18°C to 28°C
Received Signal	Input Level	Setting demodulation range Based on the value set for the reference power QPSK: -28 to $+15$ dB 16QAM: -21 to $+15$ dB 64QAM: -15 to $+15$ dB (Input signal: EVM $\leq 1\%$, BER $\leq 1 \times 10^{-12}$, 20 MHz band, SC-FDMA) Main connector input: Reference Power setting range: -20 to $+20$ dBm However, within the input level range from -30 to $+35$ dBm Sub connector input: Reference power setting range: -35 to $+5$ dBm However, within the input level range from -45 to $+20$ dBm
	Level Accuracy	Main connector: ± 3.0 dB Sub connector: ± 3.0 dB At 18°C to 28°C, for calibration CW, within the Main input level range from -30 to $+35$ dBm, the Sub input level range from -45 to $+20$ dBm, and the reference power range of ± 15 dB
	Frequency	LTE: 350 MHz to 3.0 GHz, 350 MHz to 3.8 GHz (with MD8430A-002), 350 MHz to 6.0 GHz (with MD8430A-006) W-CDMA: 400 MHz to 3.0 GHz, 400 MHz to 3.8 GHz (with MD8430A-002/006) GSM: 400 MHz to 2.0 GHz (setting resolution: 100 kHz)
	Access Method	LTE: SC-FDMA, W-CDMA: CDMA, GSM: TDMA
	Modulation Method	LTE: QPSK, 16QAM, 64QAM, 256QAM W-CDMA: BPSK, 4PAM GSM: GMSK, 8PSK
	Synchronization Acquirable Range	LTE: ± 100 μ s (PRACH), ± 30 μ s (PUSCH) W-CDMA: ± 100 chips (PRACH), ± 100 chips (DPCCH) GSM: 0 to 63 symbols (SACCH)

Signalling Tester MD8430A Specifications

RF Connector	Main	Connector: N-J, 50Ω (nom.) VSWR: ≤1.3 (Frequency Range: ≥350 MHz to ≤3800 MHz) ≤1.4 (Frequency Range: >3800 MHz to ≤6000 MHz)
	Sub (Downlink)	Connector: N-J, 50Ω (nom.) VSWR: ≤1.5 (Frequency Range: ≥350 MHz to ≤3800 MHz) ≤1.6 (Frequency Range: >3800 MHz to ≤6000 MHz)
	Sub (Uplink)	Connector: N-J, 50Ω (nom.) VSWR: ≤1.5 (Frequency Range: ≥350 MHz to ≤3800 MHz) ≤1.6 (Frequency Range: >3800 MHz to ≤6000 MHz)
Front Panel Interface	Digital IQ I/F	DX20 connector (50 pin) × 8 Digital IQ signal, IQ: 16 bit
	Monitor I/F	DX20 connector (80 pin), 3.3 V-CMOS level Connection with the Monitor board (G0091)
	Sync Out	BNC connector, 3.3 V-CMOS level Internal Sync Start signal output
	Sync In	BNC connector, 3.3 V-CMOS level External Sync Start signal input
	Clock Out	BNC connector, 3.3 V-CMOS level Internal Clock signal output
	Clock In	BNC connector, 3.3 V-CMOS level, 10 kHz to 30.72 MHz External Clock signal input
MF6900A Interface	Sync Out	Without MD8430A-008/108/208: BNC connector × 3, 3.3 V-CMOS level With MD8430A-008/108/208: BNC connector × 2, 3.3 V-CMOS level Connection with the MF6900A (Sync Start signal)
	Port	Without MD8430A-008/108/208: HIB-B16LFYGA connector × 6, LVDS level With MD8430A-008/108/208: HIB-B16LFYGA connector × 2 (Digital IQ: 2ports/connector), LVDS level HIB-B16LFYGA connector × 4 (Digital IQ: 8ports/connector), LVDS level Connection with the MF6900A (Digital IQ signal)
CE	EMC	2014/30/EU, EN61326-1, EN61000-3-2
	LVD	2014/35/EU, EN61010-1
	RoHS	2011/65/EU, (EU) 2015/863, EN IEC 63000: 2018
UKCA	EMC	S.I. 2016 No.1091, EN 61326-1, EN61000-3-2
	LVD	S.I. 2016 No.1101, EN 61010-1
	RoHS	S.I. 2012 No.3032, EN IEC 63000: 2018
Temperature	Operating	0°C to +45°C, ≤90% RH (no condensation) 0°C to +40°C, ≤90% RH (no condensation) (with Enhanced Hardware)
	Storage	-20°C to +60°C, ≤85% RH (no condensation)
Power Supply	Voltage	100 VAC to 120 VAC/200 VAC to 240 VAC (Automatic switching system)
	Frequency	50 Hz/60 Hz (Automatically changeover system)
	Power Consumption	≤1200 VA
Dimensions and Mass	Dimensions	426 (W) × 310 (H) × 500 (D) mm
	Mass	≤40 kg

Signalling Tester MD8430A Specifications

UE category table: 3GPP TS 36.306 V14.5.0 (2017-12)

☐ : MD8430A supported ☐ : MD8430A not supported

UE Category (DL)

UE Category	Maximum number of DL-SCH transport block bits received within a TTI	Maximum number of bits of a DL-SCH transport block received within a TTI	Total number of soft channel bits	Maximum number of supported layers for spatial multiplexing in DL
Category 1	10296	10296	250368	1
Category 2	51024	51024	1237248	2
Category 3	102048	75376	1237248	2
Category 4	150752	75376	1827072	2
Category 5	299552	149776	3667200	4
Category 6	301504	149776 (4 layers, 64QAM) 75376 (2 layers, 64QAM)	3654144	2 or 4
Category 7	301504	149776 (4 layers, 64QAM) 75376 (2 layers, 64QAM)	3654144	2 or 4
Category 8	2998560	299856	35982720	8
Category 9	452256	149776 (4 layers, 64QAM) 75376 (2 layers, 64QAM)	5481216	2 or 4
Category 10	452256	149776 (4 layers, 64QAM) 75376 (2 layers, 64QAM)	5481216	2 or 4
Category 11	603008	149776 (4 layers, 64QAM) 195816 (4 layers, 256QAM) 75376 (2 layers, 64QAM) 97896 (2 layers, 256QAM)	7308288	2 or 4
Category 12	603008	149776 (4 layers, 64QAM) 195816 (4 layers, 256QAM) 75376 (2 layers, 64QAM) 97896 (2 layers, 256QAM)	7308288	2 or 4

UE Category (UL)

UE Category	Maximum number of UL-SCH transport block bits transmitted within a TTI	Maximum number of bits of an UL-SCH transport block transmitted within a TTI	Support for 64QAM in UL
Category 1	5160	5160	No
Category 2	25456	25456	No
Category 3	51024	51024	No
Category 4	51024	51024	No
Category 5	75376	75376	Yes
Category 6	51024	51024	No
Category 7	102048	51024	No
Category 8	1497760	149776	Yes
Category 9	51024	51024	No
Category 10	102048	51024	No
Category 11	51024	51024	No
Category 12	102048	51024	No

UE DL Category

UE DL Category	Maximum number of DL-SCH transport block bits received within a TTI	Maximum number of bits of a DL-SCH transport block received within a TTI	Total number of soft channel bits	Maximum number of supported layers for spatial multiplexing in DL
DL Category M1	1000	1000	25344	1
DL Category M2	4008	4008	73152	1
DL Category 0	1000	1000	25344	1
DL Category 1 bis	10296	10296	250368	1
DL Category 4	150752	75376	1827072	2
DL Category 6	301504	149776 (4 layers, 64QAM) 75376 (2 layers, 64QAM)	3654144	2 or 4
DL Category 7	301504	149776 (4 layers, 64QAM) 75376 (2 layers, 64QAM)	3654144	2 or 4
DL Category 9	452256	149776 (4 layers, 64QAM) 75376 (2 layers, 64QAM)	5481216	2 or 4
DL Category 10	452256	149776 (4 layers, 64QAM) 75376 (2 layers, 64QAM)	5481216	2 or 4
DL Category 11	603008	149776 (4 layers, 64QAM) 195816 (4 layers, 256QAM) 75376 (2 layers, 64QAM) 97896 (2 layers, 256QAM)	7308288	2 or 4
DL Category 12	603008	149776 (4 layers, 64QAM) 195816 (4 layers, 256QAM) 75376 (2 layers, 64QAM) 97896 (2 layers, 256QAM)	7308288	2 or 4
DL Category 13	391632	195816 (4 layers, 256QAM) 97896 (2 layers, 256QAM)	3654144	2 or 4
DL Category 14	3916560	391656 (8 layers, 256QAM)	47431680	8
DL Category 15	749856-807744	149776 (4 layers, 64QAM) 195816 (4 layers, 256QAM, if alternativeTBS-Index-r14 is not supported) 201936 (4 layers, 256QAM, if alternativeTBS-Index-r14 is supported) 75376 (2 layers, 64QAM) 97896 (2 layers, 256QAM, if alternativeTBS-Index-r14 is not supported) 100752 (2 layers, 256QAM, if alternativeTBS-Index-r14 is supported)	9744384	2 or 4
DL Category 16	978960-1051360	75376 (2 layers, 64QAM) 97896 (2 layers, 256QAM, if alternativeTBS-Index-r14 is not supported) 100752 (2 layers, 256QAM, if alternativeTBS-Index-r14 is supported)	12789504	2 or 4
DL Category 17	25065984	391656 (8 layers, 256QAM)	303562752	8
DL Category 18	1174752-1211616	[299856 (8 layers, 64QAM) 391656 (8 layers, 256QAM)] 149776 (4 layers, 64QAM) 195816 (4 layers, 256QAM, if alternativeTBS-Index-r14 is not supported) 201936 (4 layers, 256QAM, if alternativeTBS-Index-r14 is supported) 75376 (2 layers, 64QAM) 97896 (2 layers, 256QAM, if alternativeTBS-Index-r14 is not supported) 100752 (2 layers, 256QAM, if alternativeTBS-Index-r14 is supported)	14616576	2 or 4 [or 8]

UE DL Category	Maximum number of DL-SCH transport block bits received within a TTI	Maximum number of bits of a DL-SCH transport block received within a TTI	Total number of soft channel bits	Maximum number of supported layers for spatial multiplexing in DL
DL Category 19	1566336-1658272	[299856 (8 layers, 64QAM) 391656 (8 layers, 256QAM)] 149776 (4 layers, 64QAM) 195816 (4 layers, 256QAM, if alternativeTBS-Index-r14 is not supported) 201936 (4 layers, 256QAM, if alternativeTBS-Index-r14 is supported) 75376 (2 layers, 64QAM) 97896 (2 layers, 256QAM, if alternativeTBS-Index-r14 is not supported) 201936 (4 layers, 256QAM, if alternativeTBS-Index-r14 is supported)	19488768	2 or 4 [or 8]
DL Category 20	1948064 - 2019360	[299856 (8 layers, 64QAM) 391656 (8 layers, 256QAM)] 149776 (4 layers, 64QAM) 195816 (4 layers, 256QAM, if alternativeTBS-Index-r14 is not supported) 201936 (4 layers, 256QAM, if alternativeTBS-Index-r14 is supported) 75376 (2 layers, 64QAM) 97896 (2 layers, 256QAM, if alternativeTBS-Index-r14 is not supported) 100752 (2 layers, 256QAM, if alternativeTBS-Index-r14 is supported)	24360960	2 or 4 [or 8]

UE UL Category

UE UL Category	Maximum number of UL-SCH transport block bits transmitted within a TTI	Maximum number of bits of an UL-SCH transport block transmitted within a TTI	Support for 64QAM in UL	Support for 256QAM in UL
UL Category M1	1000 or 2984	1000 or 2984	No	No
UL Category M2	6968	6968	No	No
UL Category 0	1000	1000	No	No
UL Category 1 bis	5160	5160	No	No
UL Category 3	51024	51024	No	No
UL Category 5	75376	75376	Yes	No
UL Category 7	102048	51024	No	No
UL Category 8	1497760	149776	Yes	No
UL Category 13	150752	75376	Yes	No
UL Category 14	9585664	149776	Yes	No
UL Category 15	226128	75376	Yes	No
UL Category 16	105528	105528	Yes	Yes
UL Category 17	2119360	211936	Yes	Yes
UL Category 18	211056	105528	Yes	Yes
UL Category 19	13563904	211936	Yes	Yes
UL Category 20	316584	105528	Yes	Yes
UL Category 21	301504	75376	Yes	No

NB-IoT (DL)

UE Category	Maximum number of DL-SCH transport block bits received within a TTI	Maximum number of bits of a DL-SCH transport block received within a TTI	Total number of soft channel bits
Category NB1	680	680	2112
Category NB2	2536	2536	6400

NB-IoT (UL)

UE Category	Maximum number of UL-SCH transport block bits transmitted within a TTI	Maximum number of bits of an UL-SCH transport block transmitted within a TTI
Category NB1	1000	1000
Category NB2	2536	2536

Signalling Tester MD8430A Ordering Information

Please specify the model/order number, name and quantity when ordering.

The names listed in the chart below are Order Names. The actual name of the item may differ from the Order Name.

Model/Order No.	Name
MD8430A MD8430A-005 MD8430A-025	LTE Basic Test Model Signalling Tester Extended Frequency Range to 3.8 GHz Hardware 2 Basic Test Model (BTM)
MD8430A MD8430A-005 MD8430A-027	M2M Test Model Signalling Tester Extended Frequency Range to 3.8 GHz Hardware 2 M2M Test Model (MTM)
MD8430A MD8430A-005 MD8430A-035	LTE Enhanced Test Model Signalling Tester Extended Frequency Range to 3.8 GHz Hardware 2 LTE Enhanced Test Model (ETM)
J1440A J1211 J0127A J0576B J1398A J1459A	Standard Accessories CD-ROM (Operation Manual and Maintenance Software): 1 pc LAN Cable: 2 pcs Power Cord, 3.0 m (15 A): 1 pc Coaxial Cord, 1.0 m (BNC-P · RG58A/U · BNC-P): 1 pc Coaxial Cord, 1.0 m (N-P · 5D-2W · N-P): 2 pcs N-SMA Adaptor: 6 units Digital IQ Cable (50 cm): 1 pc
MD8430A-002 MD8430A-004 MD8430A-006 MD8430A-007 MD8430A-043 MD8430A-044 MD8430A-045 MD8430A-052 MD8430A-053 MD8430A-055 MD8430A-056 MD8430A-057 MD8430A-058 MD8430A-059 MD8430A-060 MD8430A-061 MD8430A-062 MD8430A-063 MD8430A-064 MD8430A-065 MD8430A-066 MD8430A-067 MD8430A-070 MD8430A-071 MD8430A-072 MD8430A-073 MD8430A-075 MD8430A-076 MD8430A-077 MD8430A-078 MD8430A-079 MD8430A-080 MD8430A-081 MD8430A-082 MD8430A-083 MD8430A-085 MD8430A-086 MD8430A-087 MD8430A-088 MD8430A-089	Options Extended Frequency Range to 3.8 GHz Enhanced DL Frequency Bandwidth Option Extended Frequency Range to 6 GHz Extended Frequency Range to 6 GHz Hardware NTN NB-IoT (GEO) LTE DL 6 Carrier Aggregation Option LTE UL 3 Carrier Aggregation Option W-CDMA Fading Option SCME Fading Option LTE 2x2 MIMO Fading Option LTE 4x2 MIMO Fading Option LTE 4x4 MIMO Fading Option LTE 8x2 MIMO Fading Option LTE 8x4 MIMO Fading Option LTE FDD Option LTE TDD Option LTE Enhanced MTC Option Narrow Band IoT Option LTE Anchor For 5G NSA Option W-CDMA Option GSM Option RF/Fading Driver Option HSPA Multi Carrier Option W-CDMA/GSM Ciphering Option LTE Licensed Assisted Access (LAA) Option LTE Dual Connectivity Option LTE DL 4x4 MIMO Option LTE DL 8x4 MIMO Option LTE Internal Server Option LTE UL 2x2 MIMO Option LTE UL 256QAM Option LTE Ciphering Option LTE ROHC Option LTE MBMS Option LTE ZUC Ciphering Option LTE Carrier Aggregation Option Ciphering Option LTE CoMP Option LTE DL 4 Carrier Aggregation Option LTE DL 5 Carrier Aggregation Option
MD8430A-103 MD8430A-107 MD8430A-117 MD8430A-203 MD8430A-207 MD8430A-217	Extended Frequency Range to 3.8 GHz Hardware Retrofit (for Asia, Oceania) Extended Frequency Range 3 GHz to 6 GHz Hardware Retrofit (for Asia, Oceania) Extended Frequency Range 3.8 GHz to 6 GHz Hardware Retrofit (for Asia, Oceania) Extended Frequency Range to 3.8 GHz Hardware Retrofit (FO) Extended Frequency Range 3 GHz to 6 GHz Hardware Retrofit (FO) Extended Frequency Range 3.8 GHz to 6 GHz Hardware Retrofit (FO)

Model/Order No.	Name
MX843010E MX843070E MX786201A MX800050A	Software Options LTE Control Software W-CDMA/GSM Control Software Rapid Test Designer (RTD) Rapid Test Designer Platform (RTD)
MD8430A-SS125 MD8430A-SS135	Main frame Support Service [FDD] 1 Year Support Service for LTE FDD (BTM) 1 Year Support Service for LTE FDD (ETM)
MD8430A-SS126 MD8430A-SS136	[TDD] 1 Year Support Service for LTE TDD (BTM) 1 Year Support Service for LTE TDD (ETM)
MD8430A-SS170	[W-CDMA/GSM] 1 Year Support Service for W-CDMA/GSM
MD8430A-SS171	[LTE eMTC] 1 Year Support Service for LTE eMTC
MD8430A-SS143 MD8430A-SS172	[NB-IoT] 1 Year Support Service for NTN NB-IoT (GEO) 1 Year Support Service for NB-IoT
MX843010E-SS120	LTE Control Software Support Service 1 Year Support Service
Z1670A Z1789A Z1671A Z1790A Z1672A Z1791A Z1873A Z1976A Z1977A	Upgrade Options LTE FTM to ETM Upgrade Kit LTE FTM to ETM Upgrade Kit (FO) LTE STM to ETM Upgrade Kit LTE STM to ETM Upgrade Kit (FO) LTE PTM to ETM Upgrade Kit LTE PTM to ETM Upgrade Kit (FO) LTE BTM to ETM Upgrade Kit LTE BTM to MTM Upgrade Kit LTE MTM to ETM Upgrade Kit
MN8150A G0091 J1005 J1416A J1609A	Application Products RF Combiner Unit Monitor Board Monitor Cable 80 LVDS CABLE Signal Divider

*: A PC*1 running Microsoft Visual C++ 2010 Express Edition or Microsoft Visual Studio Express 2015 is required to use the MD8430A. It must be supplied by the customer.

*1: The PC controller for the MD8430A must meet or exceed the following specifications:

- OS: Windows 10 Pro (64 bit) or later
- CPU: Intel Core i7-6700 3.4 GHz or more
- RAM: 8 GB or more
- NIC: 1000 BASE-T

Windows®, Visual C++® is a registered trademark of Microsoft Corporation in the USA and other countries.

Intel®, Core™ i5 is registered trademarks of Intel Corporation or its subsidiaries in the USA and other countries.



+1 (888) 880-6804
sales@testforce.com

Anritsu Advancing beyond

Specifications are subject to change without notice.

• United States

Anritsu Americas Sales Company
490 Jarvis Drive, Morgan Hill, CA 95037-2809, U.S.A.
Phone: +1-800-Anritsu (1-800-267-4878)

• Canada

**Anritsu Electronics Ltd.
Americas Sales and Support**
490 Jarvis Drive, Morgan Hill, CA 95037-2809, U.S.A.
Phone: +1-800-Anritsu (1-800-267-4878)

• Brazil

Anritsu Eletronica Ltda.
Praça Amadeu Amaral, 27 - 1 Andar
01327-010 - Bela Vista - Sao Paulo - SP, Brazil
Phone: +55-11-3283-2511
Fax: +55-11-3288-6940

• Mexico

Anritsu Company, S.A. de C.V.
Blvd Miguel de Cervantes Saavedra #169 Piso 1, Col. Granada
Mexico, Ciudad de Mexico, 11520, MEXICO
Phone: +52-55-4169-7104

• United Kingdom

Anritsu EMEA Ltd.
200 Capability Green, Luton, Bedfordshire, LU1 3LU, U.K.
Phone: +44-1582-433200
Fax: +44-1582-731303

• France

Anritsu S.A.
12 avenue du Québec, Immeuble Goyave,
91140 VILLEBON SUR YVETTE, France
Phone: +33-1-60-92-15-50

• Germany

Anritsu GmbH
Nemetschek Haus, Konrad-Zuse-Platz 1,
81829 München, Germany
Phone: +49-89-442308-0
Fax: +49-89-442308-55

• Italy

Anritsu S.r.l.
Spaces Eur Arte, Viale dell'Arte 25, 00144 Roma, Italy
Phone: +39-6-509-9711

• Sweden

Anritsu AB
Kistagången 20 B, 2 tr, 164 40 Kista, Sweden
Phone: +46-8-534-707-00

• Finland

Anritsu A/S
Technopolis Aviapolis, Teknobulevardi 3-5 (D208.5),
FI-01530 Vantaa, Finland
Phone: +358-20-741-8100

• Denmark

Anritsu A/S
c/o Regus Winghouse, Ørestads Boulevard 73, 4th floor,
2300 Copenhagen S, Denmark
Phone: +45-7211-2200

• Spain

**Anritsu EMEA GmbH
Representation Office in Spain**
Calle Manzanares 4, Primera planta, 28005 Madrid, Spain
Phone: +34-91-572-6761

• Austria

Anritsu EMEA GmbH
Am Belvedere 10, A-1100 Vienna, Austria
Phone: +43-(0)1-717-28-710

• United Arab Emirates

Anritsu A/S
Office No. 164, Building 17, Dubai Internet City
P. O. Box – 501901, Dubai, United Arab Emirates
Phone: +971-4-3758479

• India

Anritsu India Private Limited
6th Floor, Indiqube ETA, No.38/4, Adjacent to EMC2,
Doddanekundi, Outer Ring Road, Bengaluru – 560048, India
Phone: +91-80-6728-1300
Fax: +91-80-6728-1301

• Singapore

Anritsu Pte. Ltd.
1 Jalan Kilang Timor, #07-04/06 Pacific Tech Centre
Singapore 159303
Phone: +65-6282-2400
Fax: +65-6282-2533

• Vietnam

Anritsu Company Limited
16th Floor, Peakview Tower, 36 Hoang Cau Street, O Cho Dua Ward,
Dong Da District, Hanoi, Vietnam
Phone: +84-24-3201-2730

• P.R. China (Shanghai)

Anritsu (China) Co., Ltd.
Room 2701-2705, Tower A, New Caohejing International
Business Center No. 391 Gui Ping Road Shanghai, 200233, P.R. China
Phone: +86-21-6237-0898
Fax: +86-21-6237-0899

• P.R. China (Hong Kong)

Anritsu Company Ltd.
Unit 1006-7, 10/F., Greenfield Tower, Concordia Plaza,
No. 1 Science Museum Road, Tsim Sha Tsui East,
Kowloon, Hong Kong, P.R. China
Phone: +852-2301-4980
Fax: +852-2301-3545

• Japan

Anritsu Corporation
8-5, Tamura-cho, Atsugi-shi, Kanagawa, 243-0016 Japan
Phone: +81-46-296-6509
Fax: +81-46-225-8352

• Korea

Anritsu Corporation, Ltd.
8F, A TOWER, 20, Gwacheondaero 7-gil, Gwacheon-si,
Gyeonggi-do, 13840, Republic of Korea
Phone: +82-2-6259-7300
Fax: +82-2-6259-7301

• Australia

Anritsu Pty. Ltd.
Unit 20, 21-35 Ricketts Road, Mount Waverley, Victoria 3149, Australia
Phone: +61-3-9558-8177
Fax: +61-3-9558-8255

• Taiwan

Anritsu Company Inc.
7F, No. 316, Sec. 1, NeiHu Rd., Taipei 114, Taiwan
Phone: +886-2-8751-1816
Fax: +886-2-8751-1817